



DV-AS-21

AirShare USER MANUAL



244 Bergen Blvd Woodland Park NJ 07424
973-785-4347 www.fsrinc.com

1 Limited Warranty

The DV-AS-21 is warranted against failures due to defective parts or faulty workmanship for a period of three years after delivery to the original owner. During this period, FSR will make any necessary repairs or replace the unit without charge for parts or labor. Shipping charges to the factory or repair station must be prepaid by the owner, return-shipping charges (via UPS Ground) will be paid by FSR.

This warranty applies only to the original owner and is not transferable. In addition, it does not apply to repairs done by other than the FSR factory or Authorized Repair Stations.

This warranty shall be cancelable by FSR at its sole discretion if the unit has been subjected to physical abuse or has been modified in any way without written authorization from FSR. FSR's liability under this warranty is limited to repair or replacement of the defective unit.

FSR will not be responsible for incidental or consequential damages resulting from the use or misuse of its products. Some states do not allow the exclusion of incidental or consequential damages, so the above limitations may not apply to you. This warranty gives you specific legal rights, and you may also have other rights which vary from state to state.

Warranty claims should be accompanied by a copy of the original purchase invoice showing the purchase date (if a Warranty Registration Card was mailed in at the time of purchase, this is not necessary). Before returning any equipment for repair, please read the important information on service below.

SERVICE

Before returning any equipment for repair, please be sure that it is adequately packed and cushioned against damage in shipment, and that it is insured. We suggest that you save the original packaging and use it to ship the product for servicing. Also, please enclose a note giving your name, address, phone number and a description of the problem.

NOTE: all equipment being returned for repair must have a Return authorization (RMA) Number. To get a RMA Number, please call the FSR Service Department (1-800-332-FSR1). Please display your RMA Number prominently on the front of all packages.

CONTACT INFORMATION

FSR INC.

244 Bergen Blvd.

Woodland Park, NJ 07424

Phone: (973) 785-4347 Order Desk Fax: (973) 785-4207

E-mail: sales@fsrinc.com

Web Site: <http://www.fsrinc.com>

Table of Contents

1	Limited Warranty	2
2	Features:	6
3	Overview	6
3.1	AirShare System	6
3.2	AirShare system diagram	7
4	Specification:	8
5	Panel Layout	10
5.1	AirShare Front Panel	10
5.2	AirShare Rear Panel	11
5.3	Software Interface	14
5.3.1	Home Page	14
5.4	Quick Start for Screen Sharing	17
6	Installation	18
6.1	Mounting methods for the Base unit	18
6.2	Antennas	19
6.3	AirShare Power Connection	20
6.4	AirShare Video Connection	20
6.5	AirShare Audio Connection	21
6.6	AirShare LAN connection	22
6.7	LAN Indicator	23
6.8	USB device connection	23
6.9	Wiring Diagram	25
6.10	AirShare Client Software and Client Connection setup	25
6.10.1	Enable Portable Hotspot (WIFI)	26
6.10.2	Enable LAN connection	27
6.11	Client Sharing	28
6.11.1	For a shared PC/Laptop	28
6.11.2	For a Shared Mobile Device	29
7	“Setting” Menu	30
7.1	Ethernet:	31

7.1.1	IP Address	31
7.1.2	Ethernet MAC address	31
7.1.3	Proxy & IP settings	31
7.1.4	PPPoE settings	33
7.2	Wireless network	35
7.2.1	Wireless network configuration wizard	35
7.2.2	Show SSID and PASS when mirroring	35
7.2.3	Auto change Wi-Fi hotspot password	35
7.2.4	Wifi analyzer	36
7.3	Moderator Control	42
7.3.1	Preview Windows	42
7.3.2	Auto share for WMT-mini	43
7.4	General setting	44
7.4.1	Auto create launcher	44
7.4.2	Auto Standby	44
7.4.3	Airplay screen quality	45
7.4.4	HDMI output resolution	45
7.4.5	HDMI input auto switch	46
7.4.6	Home screen background image	46
7.5	Security setting:	46
7.5.1	LAN discovery & Connection	47
7.5.2	Remote view lock	47
7.5.3	Clear history after meeting	47
7.5.4	Change admin password	47
7.6	Language	48
7.7	System Update	49
7.8	Date & Time	49
7.9	About Device	50
7.9.1	Model number:	50
7.9.2	Software version:	50
8	Updating AirShare	50

8.1	Upgrading the AirShare Base Unit:.....	50
8.2	Upgrading Launcher (PC client software):	56
9	Operation	58
9.1	Transmitting PC desktop	58
9.1.1	For Microsoft Windows PC/Laptop	58
9.2	Transmitting MAC OS PC/Laptop and IOS mobile device	58
9.2.1	How to use airplay/screen mirroring?	59
9.2.2	“WirelessMedia Lite” App for IOS	59
9.3	Transmit Android device wireless	63
9.3.1	“WirelessMedia Lite” App for Android	63
9.4	HDMI Input Select	67
10	WIFI Recommendation Setting.....	68
10.1	Check the WIFI config on AirShare (See WiFi Analyzer section).....	68
10.2	Check the WIFI RSSI on PC or Mobiles	68
11	Troubleshooting.....	68

2 Features:

Supports VESA PC resolution input, auto-detecting.

Can transmit PC's mirror/extended desktop or Macbook's mirror desktop.

Can transmit smart devices' mirror, photos, videos, music, etc.

Supports remote viewing of the active display using the WirelessMedia Lite app on smart devices.

Supports remote control of the active source devices from other smart devices.

Supports "Airplay" for apple device.

3 Overview

3.1 AirShare System

AirShare allows connecting or participating in a meeting simply by clicking a visual button. It also allows others to join making the meeting more efficient and productive. A typical AirShare system contains:

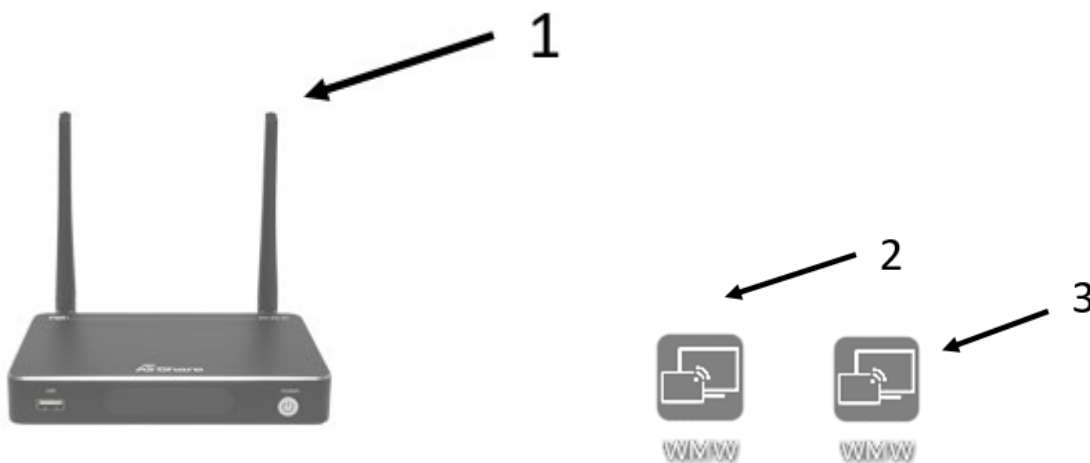


Fig 1.1

ID	Name	Description
1	Base Unit	Host unit
2	WirelessMedia Lite for Android APK	For smart android devices to share the screen, transmit photos/music/video/files, exchange files, remote view and review mouse.
3	WirelessMedia Lite APP for IOS	For smart IOS devices to share the screen, transmit photos/music/video/files, exchange files, remote view and review mouse.

ID	Name	Description
1	Antenna	2 pcs of antenna are included in the box. To avoid damage, they are not pre-mounted. The antenna can rotate for a better wireless connection.
2	Power adapter	International plug inter-changeable power adapter, of which the plugs includes US, Europe, UK, Australia standard.

3.2 AirShare system diagram

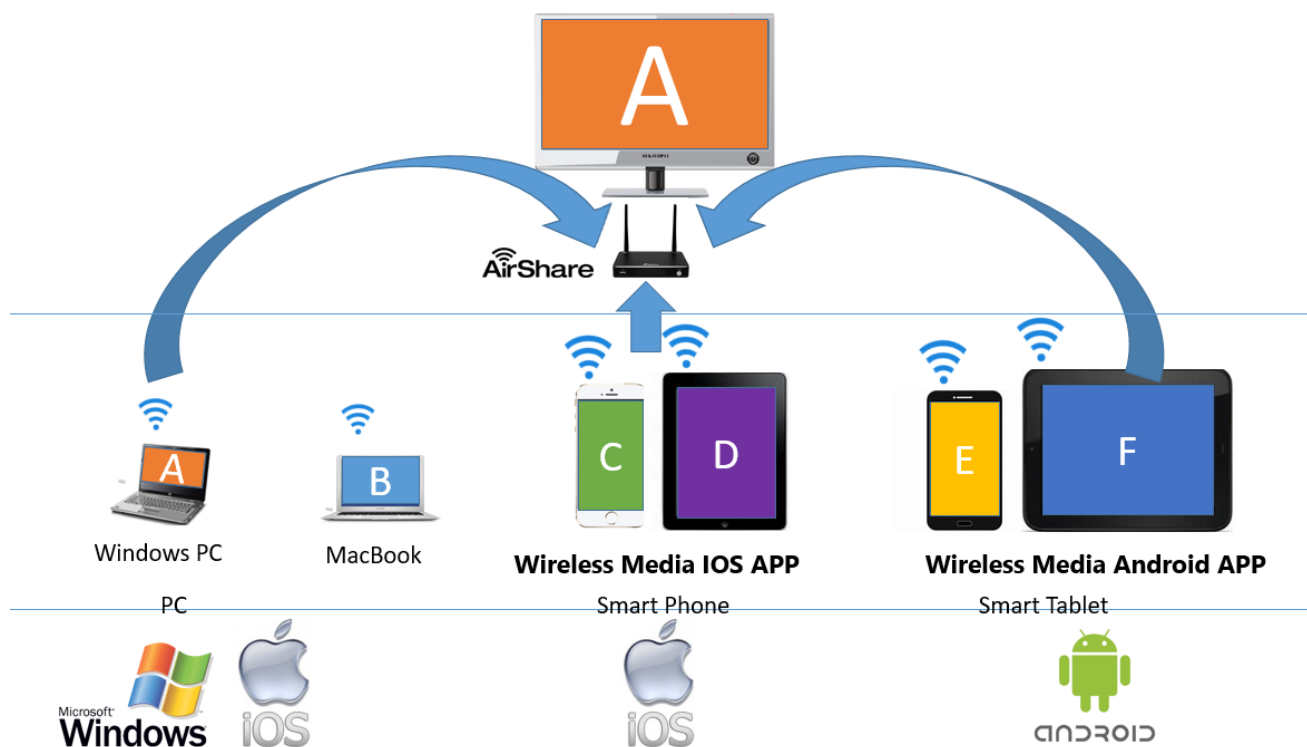


Fig 1.2

4 Specification:

Specifications	
Features	
SW format	WirelessMedia Lite.exe for Windows
Security	WPA/WPA2
Required Windows OS	Windows XP/Vista/7/8/8.1/10 and above, 32 & 64 bit
Video Capacity	Wireless Transmission 1080P@ ≤ 60Hz
Distance	35m without obstacles between laptop WIFI module and AirShare
Control	
Button	Visual button on Laptop
Indicator	Green/Red visual indicator on visual button
Specifications of AirShare	
Supported Formats	
Video Input Formats	1x Wireless, 1x HDMI
Format Compliance	WIFI 11n/ac
Video Output Formats	1x HDMI
Video Output Resolution	1920x1080@60Hz, 1920x1200@60Hz
Format Compliance	HDMI 1.4
Audio Input Formats	1x DVI Audio in
Audio Output Formats	HDMI: embedded digital audio De-embedded analog stereo audio: 20 kΩ impedance
Inputs Connectors	
Wireless Input	WIFI 11n/ac
Outputs Connectors	
HDMI Output	1x HDMI 19-pin female connector
Analog Audio Output	1x 3.5mm PC audio female connectors
Features	
Number of window simultaneous on screen	1
Number of simultaneous connections	≤ 14
Data rate wireless	Up to 300Mbps, depending on the WIFI module of the laptop
Video Playback Frame Rate	20-30 FPS
Wireless transmission protocol	IEEE 802.11 a/g/n/ac
Frequency band	2.4 GHZ and 5 GHz
Video Capacity:	1080P @ ≤ 60Hz Airplay for IOS devices 1080P @ ≤ 60Hz "WirelessMedia Lite" app

Specifications	
Remote Viewing	Mirroring remote view on mobile by app installed
Mobile Capability	Free IOS app, Free Andriod app
Encryption	AES WPA PSK, WPA2 PSK
Remote Mouse	Remote control moderator's PC
Control	
On-Screen Setting	Configuration Visual Button, by HID mouse, or remote control on APP
Ethernet	Telnet
Mechanical	
Dimensions (W x D x H)	5.5" x 3.74" x 0.63" (140mm x 95mm x 16mm)
Weight	0.4 lbs (200g)
Construction	1~2mm plastic with matte black finish
Environmental	
Operating Temperature	+32° to +104° F (0° to +40° C)
Storage Temperature	-4° to +140° F (-20° to +60° C)
Humidity (Storage / Operating)	20% to 90% (non-condensing)
Power	
DC Power	5V
Power Consumption	10W (max.)
Accessories Included	
1x DC adapter with four plug-in, US, Europe, UK, Australia	

5 Panel Layout

5.1 AirShare Front Panel



ID	Name	Description
1	Front USB connector	<p>Used to update the software of the AirShare.</p> <p>Used for connecting a mouse or USB-based touch screen to select local HDMI Input, control the SETTING configuration and open the Help Page.</p>
2	POWER button / back-lit LED indicator	<p>Powers the unit on and off and indicates power status of the AirShare Base Unit.</p> <p>NOTE: Applying power by connecting the Power adapter to the AirShare Base Unit will power the unit on without having to press the Power button. The Power button can turn the unit off or back on without removing the Power adapter once it is connected.</p>

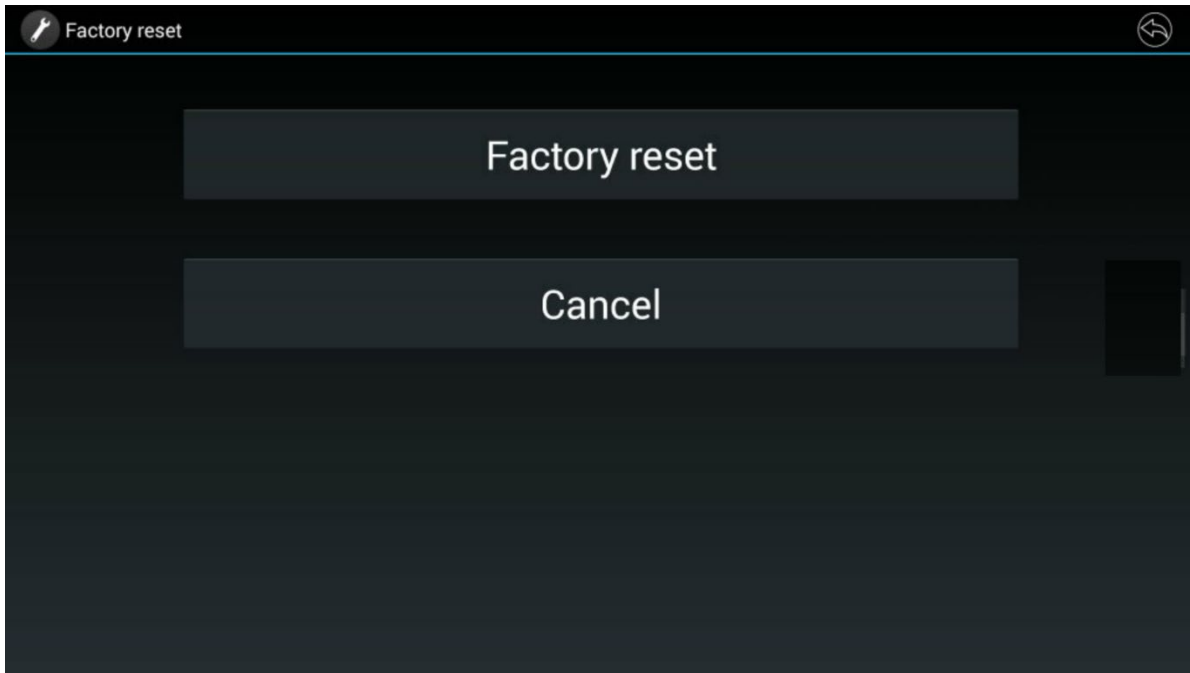
5.2 AirShare Rear Panel



ID	Name	Description
1	DC Power Input	Connect the included power adapter to this jack, and connect the AC plug to an available electrical outlet
2	LAN Ethernet port	Connect an Ethernet cable between this jack and a LAN to connect AirShare to LAN
3	Front / Rear USB connector	Connect mouse, touch screen, USB stick, etc...
4	Reset	Reset button to restore to the factory default setting
5	HDMI output	Connect an HDMI cable from this port to an HD display.
6	Line audio output	2 channel analog audio output, Connect a 3.5mm mini-jack PC connector from this jack to the Line In jack of an audio system.
7	HDMI input	Connect a local HDMI input, up to 4K_60Hz, HDCP2.2 from source device
8	Line audio input	2 channel analog audio output, Connect a 3.5mm mini-jack PC connector from this jack to the Line In jack of an external audio source devices
9	Antenna connection points	Screw the two included antennas into these two ports

Restore default configuration via Reset button:

- Power up the Base unit.
- When the *Home Page* appears, press the reset button at the rear panel of AirShare using a pen tip or small screwdriver for at least 2 seconds until the *factory reset page* is shown.
- Connect a mouse to the AirShare Base unit and click *Factory Reset*. The Base unit will reboot after 3 seconds to the default configuration. Or click *Cancel* to return.



Default Configuration Settings:

The Default Configuration Settings are as follows:

Ethernet:

Proxy: None

IP setting: DHCP

Wireless network:

Portable Wi-Fi hotspot: ON

SSID: AirShare

Security: WPA2 PSK

Frequency: 2.4GHZ

Channel: 6Hz

AirShare setting:

Airplay screen quality: High

Output resolution: 1920x1080_60Hz,

Home screen background image: Supports customized changeable background

Volume: 50

Security setting

LAN connection: Disabled

Presenter Lock:: Disabled (Remote view the main screen from mobile device application)

Language:

English

Date & time:

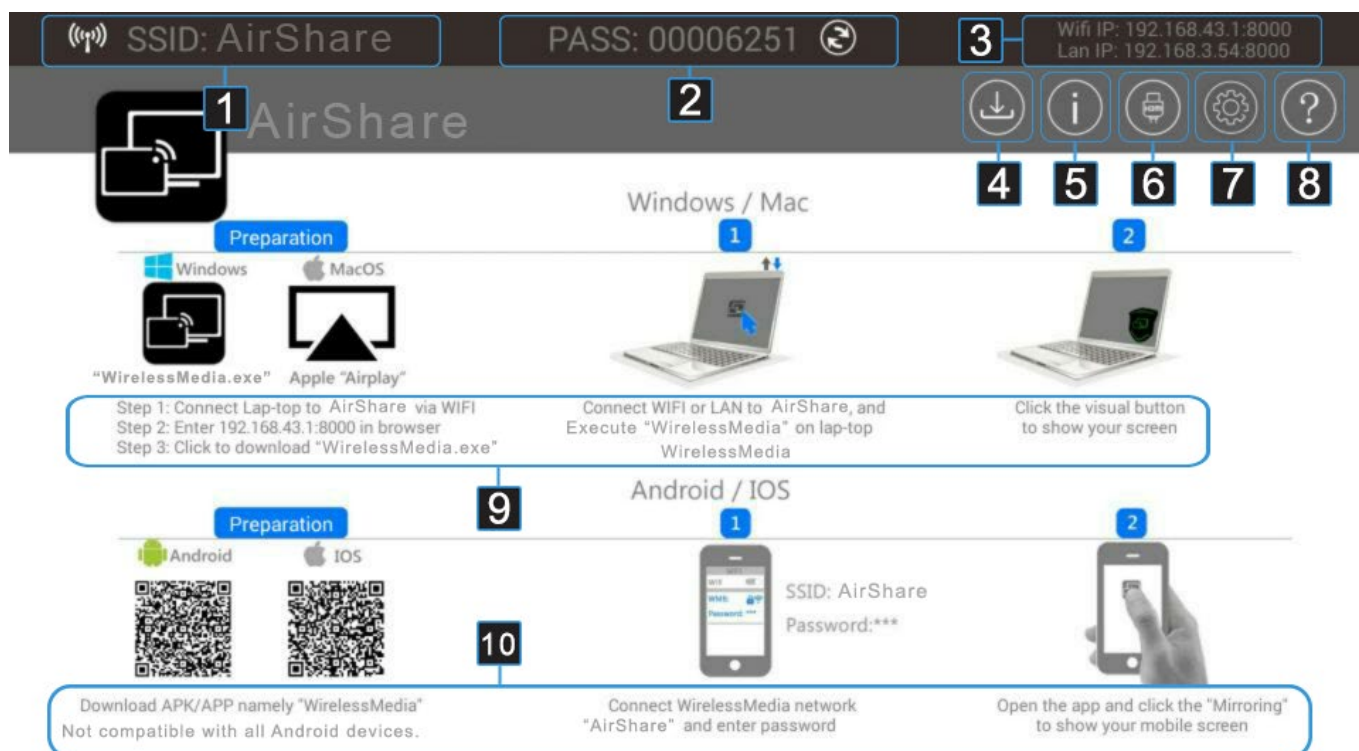
Automatic date & time: (uses network-provided time)



Attention: LAN connection default is set to “disable” when unit settings are restored. For a corporate LAN connection, you will need to manually turn it on. Refer to Page [\[Security setting:\]](#) on how to turn it on.

5.3 Software Interface

5.3.1 Home Page



ID	Name	Description
1	SSID: (Service Set Identifier) Name	Displays the AirShare SSID name
2	PASS: (Password)	Displays the password when connecting to the WIFI SSID of the AirShare. Generates new password if desired.
3	WIFI IP address LAN IP address	Displays the Corporate WIFI IP address and LAN IP address of the AirShare.
4	Download	Downloads launcher (PC software) to a USB Stick
5	Information	Toggles the visibility of the SSID/PASS/IP information.
6	HDMI input	Switches to the local HDMI input.
7	Settings	Connect a mouse to either USB port and click to open the "Settings" menu.


ID	Name	Description
8	Help	Access documents for installation, operation or after sales support
9	Quick start for PC operating system	Steps for how to transmit PC/Laptop desktop onto the main screen.
10	Quick start for Android/IOS operating system	Steps for how to transmit smart mobile devices either powered by Android or IOS desktop onto the main screen.

Changeable PASS (password)

- For AirShare FW version 1.1.5 or above, PASS (password) is changeable randomly every 5 minutes. For AirShare FW version above 1.2.6, PWD (password) is configurable is the **Setting** page. Setting choices are: Never Change, 5m, 30m, 1h, 2h, 4h 24h.
- If only the PWD (password) is changed, smart mobile device has to enter the correct SSID and PASS (password) to connect the AirShare hotspot, in order to access all “WirelessMedia Lite” functionality.
- When AirShare is disconnected with the launcher (PC software) for 15s, it'll open up a dialog box for user to confirm whether to clear the meeting history, including all data/files to be temporarily memorized in the AirShare.

WIFI IP address & LAN IP address:

- WIFI IP address shows the hotspot's IP and LAN IP address shows the corporate LAN (Local Area Network).

 **Attention:** When it shows “N/A”, it means that the AirShare is not connected to WIFI or the LAN (Local Area Network) by CAT cable or it failed to get an available IP address by the corporation router.

Download

Click this button to download the launcher (PC software) for PC to a USB Stick.

Information

Click this button to set the information of SSID/PASS/IP address invisible, re-click to set the information of SSID/PASS/IP address visible.

HDMI Input

Click this button to switch to the local HDMI source on the AirShare.

Settings Sub Menus

It gives a way to control all the configuration of AirShare over a LAN (local Area Network). User shall use the USB connected mouse or the Remote Mouse function in the “WMB for Android” Apk or “WMB for IOS” application.

It includes the sub-menu as below

- Ethernet
- Wireless network
- Moderator Control
- General setting
- Security setting
- Language
- System Update
- Date & Time
- About Device

Help

- User Manual
- FAQ
- Readme

5.4 Quick Start for Screen Sharing

PC/Lap quick start steps

- Step 1: Connect PC/Laptop to AirShare via WIFI
- Step 2: Enter WIFI IP or plug USB Stick to AirShare to download "WMW" exe
- Step 3: Run "WMW" on PC/Laptop open the "WMW" GUI and view the list of available AirShare Devices
- Step 4: Select your AirShare from the list and select "Ready to share" to show your screen

Smart mobile devices quick start steps

- Step 1: Download "WMW" APK/APP
- Step 2: Connect to wireless network "****" and enter password
- Step 3: Open the "WMW" application and click "Mirror" to share your mobile screen or "TV Mirror" to view the Moderator screen on your mobile device.

6 Installation

Overview


- Mounting methods for the Base unit
- Table mounting
- Wall mounting
- Recommendations about antenna placement and orientation
- AirShare Power Connection
- AirShare Video Connection
- AirShare Audio connection
- AirShare LAN connection
- About USB device connection
- Wiring Diagram

6.1 Mounting methods for the Base unit

The Base unit can be installed in different ways in a meeting room.

Actual mounting hardware depends on the specific mounting surface and are not provided.

- Table mount (simply place on the table surface or secure with included mounting brackets)
- Wall mount (Secure to wall using included mounting brackets)

 **Attention:** For optimal performance, install the Base unit close to the display and avoid obstacles between the Base unit and PC/Laptop.

How to mount the AirShare Base Unit:

Note: Mounting screws and anchors are not included in the AirShare box. The type of screws depend on the mounting surface (stone, wood, plasterboard ...) you are mounting the Base Unit to. Make sure the head of the screw is not larger than the keyhole in the bracket.

1. Drill two holes in the wall as indicated on the drawing.
Horizontal distance: 177 mm \pm 0.15
2. Attach the two offset brackets with the four Phillips flathead screws to the tapped holes at the bottom of the AirShare Base. The brackets should be installed properly to create an offset between the base unit and the wall.

3. Insert an appropriate wall anchor in each hole depending on the wall type and drive in two screws . Leave the screws at least 0.15mm space to place the bracket between the screw head and the wall. (See note above)
4. Place the AirShare on the wall, so that the holes on the bracket match the two screws that were left loose on the wall and slide the Base Unit downwards until it bottoms on the keyholes.
5. Tighten the two screws while holding the Base Unit down to secure.

6.2 Antennas

Screw the two Antennas into the antenna terminals on the rear of the AirShare Base Unit. The articulated antennas can be rotated for a better wireless connection.

Antenna placement rules:

- The antennas should be oriented vertically, perpendicular to the ceiling and parallel to the walls.
- The antennas should be installed far enough (at least 50cm/1.6ft) from metallic surfaces to avoid unwanted reflections and far enough (at least 1m/3.3ft) from other radio equipment that operates in the same frequency range, e.g. other Wi-Fi access points, cordless telephones, microwave ovens, etc.
- It is best to install antennas at least 15 cm (6 inches) from concrete walls.
- The ideal situation would be a direct line of sight between the Base Unit antennas and any shared devices. Any obstruction will cause the signal to follow a longer propagation path, which can result in performance degradation.
- Due to the radio pattern of the dipole antennas, they should not be placed in the walking path of AirShare users.

6.3 AirShare Power Connection

The AirShare Base unit can be powered by the external universal power adapter included. The unit powers up and boots when the power adapter is connected and it is not necessary to push the power button.

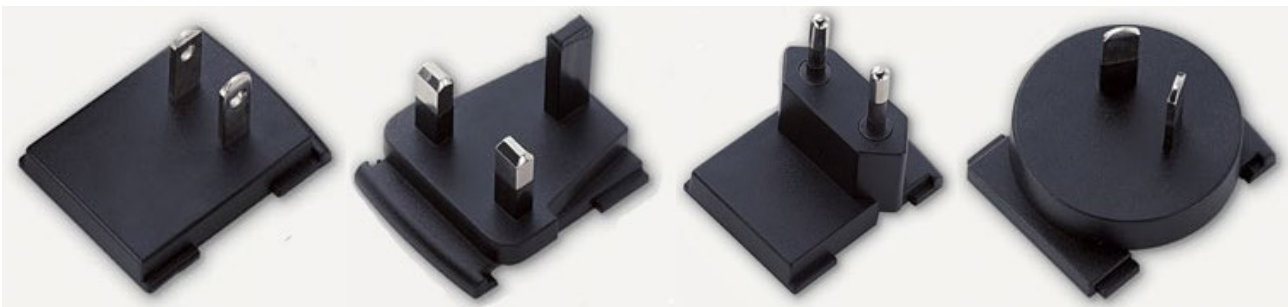
How to connect the external power adapter:

Connect the power adapter plug to the AirShare Base Unit DC Input jack.

Push and slide the appropriate AC power plug (US, UK, EU or AU shown below) to the power adapter.

Press the locking tab and slide to remove the AC power plug if a different style is required at any time.

Connect the AC power cable plug into the wall outlet.

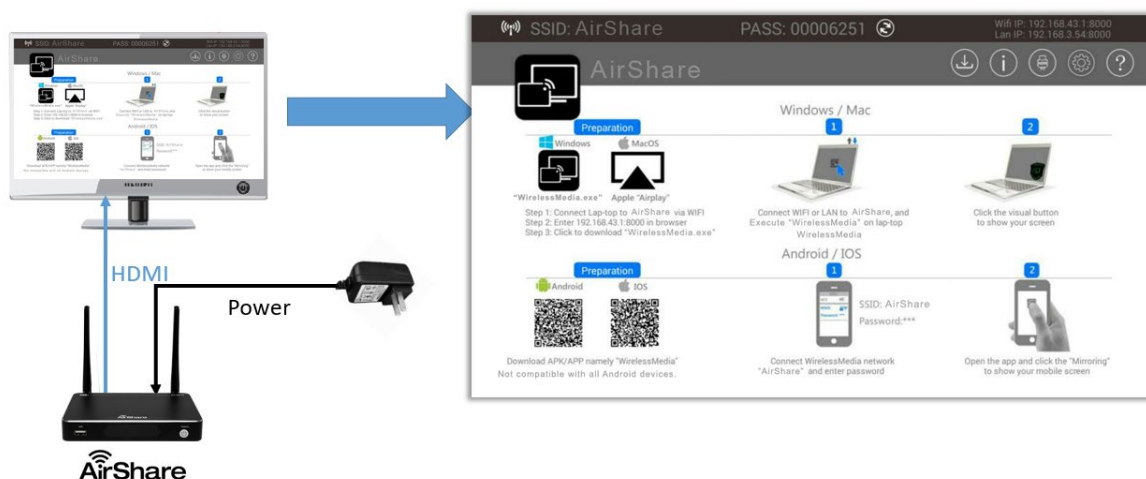


6.4 AirShare Video Connection.

Connect an HDMI cable from the AirShare HDMI Output to the HDMI input of an HD display.

Connect the power adapter to the AirShare Base Unit

After a moment, the Home Page is displayed:



6.5 AirShare Audio Connection

AirShare can transmit the audio output of the shared PC/Laptop to the Base Unit together with the video signal. The audio will output at line levels from the AirShare Base Unit Line Out 3.5mm mini jack connector and via the HDMI output connectors simultaneously.

Embedded Audio via HDMI

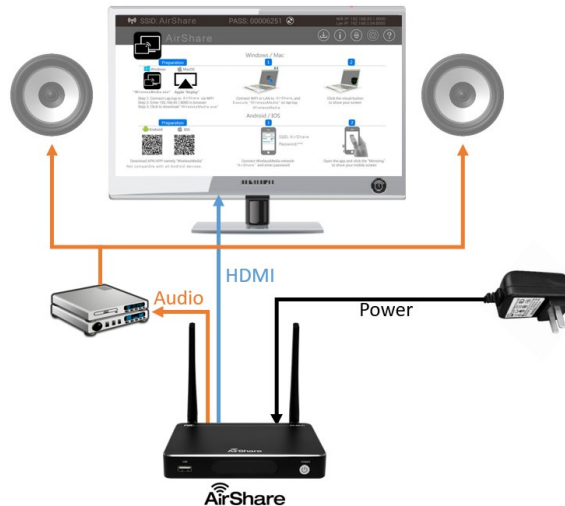
When connected via HDMI to a display that supports embedded audio via internal speakers or a line output to an external sound system, a separate audio connection is not necessary. The audio signal is sent together with the video signal from the AirPlay Base Unit to the main display as shown below.



Separate Audio via AirShare Base Unit Line Output Audio Jack

When connected via HDMI to a display that does not support embedded audio via internal speakers or does not have a line output to an external sound system, a separate audio connection will be necessary.

Connect an audio cable with mini jack socket 3.5mm connector into the audio of the Base Unit. Connect the other side to the meeting room's sound system.



Be sure the source PC/Laptop is sharing on the main screen
Check *Setting* configuration, to adjust the *Volume* set in *General setting* tab.

Source PC/Laptop Sound notes:

- By default, AirShare will mute the internal speaker of the source PC/Lap and transmit the audio to the AirShare Base Unit, once the source PC/Laptop is successfully shared to the main display, in order to avoid audio delay issues.
- When the source PC/Laptop sharing session ends, the local speakers will become un-muted.
- To keep the internal speaker of the source PC/Laptop un-muted while sharing the audio to the AirShare Base Unit, click the audio mute icon in the source PC/Laptop status bar to turn on the internal speaker.

6.6 AirShare LAN connection

The Base Unit can be connected to a local network or directly to a PC/laptop. For normal operation, a LAN connection is not necessary. When needed, it's suggested to connect the AirShare to the internet.

The LAN connection can be used for:

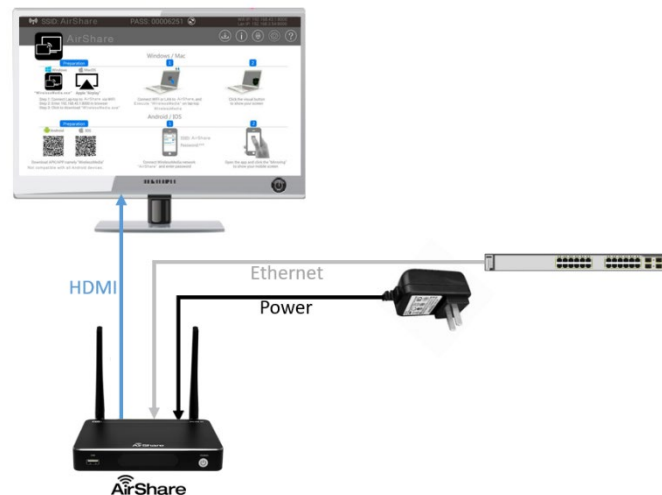
Network integration of the AirShare Base Unit
Telnet control the Base Unit.
Maintenance purposes

How to connect

Connect a network cable with RJ-45 connector into the LAN port of Base Unit.

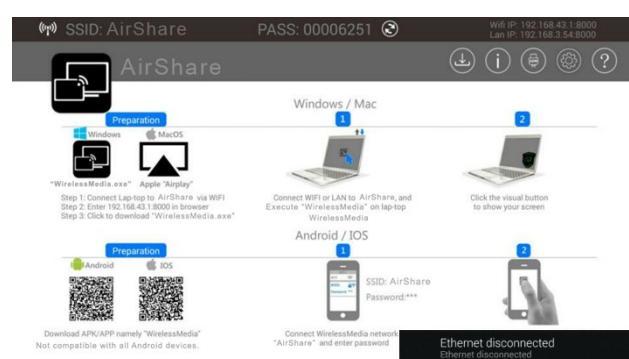
Connect the other side to LAN

If the LAN Ethernet switcher support POE (Power over Ethernet), it could power up the AirShare than using the external power adapter.



6.7 LAN Indicator

When connected to LAN, an OSD “Ethernet Connected” is shown on the *home page*, as shown below
 When disconnected to LAN, an OSD “Ethernet Unconnected” is shown on the *home page*, as shown below.



6.8 USB device connection

AirShare can be controlled by USB-based mouse/touch screen.

To configure the SETTING, HELP and HDMI INPUT.

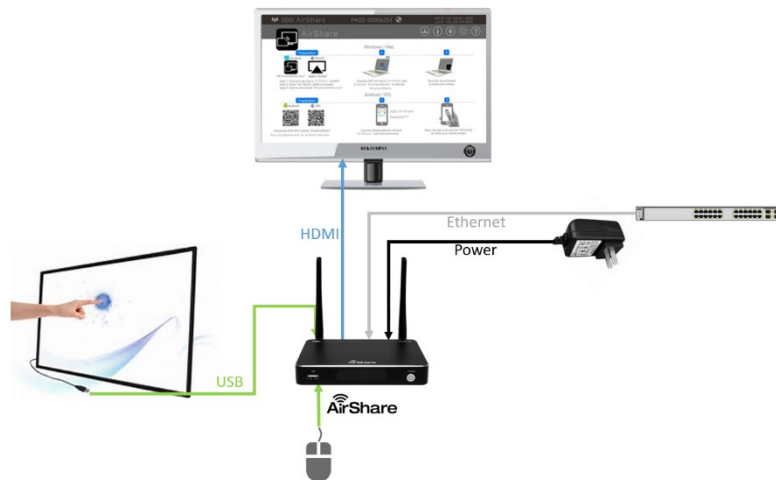
To control the shared PC/Laptop

To activate system upgrading

For white board or annotation

How to connect a mouse or touch screen:

Plug the USB connector of a mouse or touch screen to either USB input of the AirShare Base Unit



How to use USB control:

For USB mouse

Single click to select

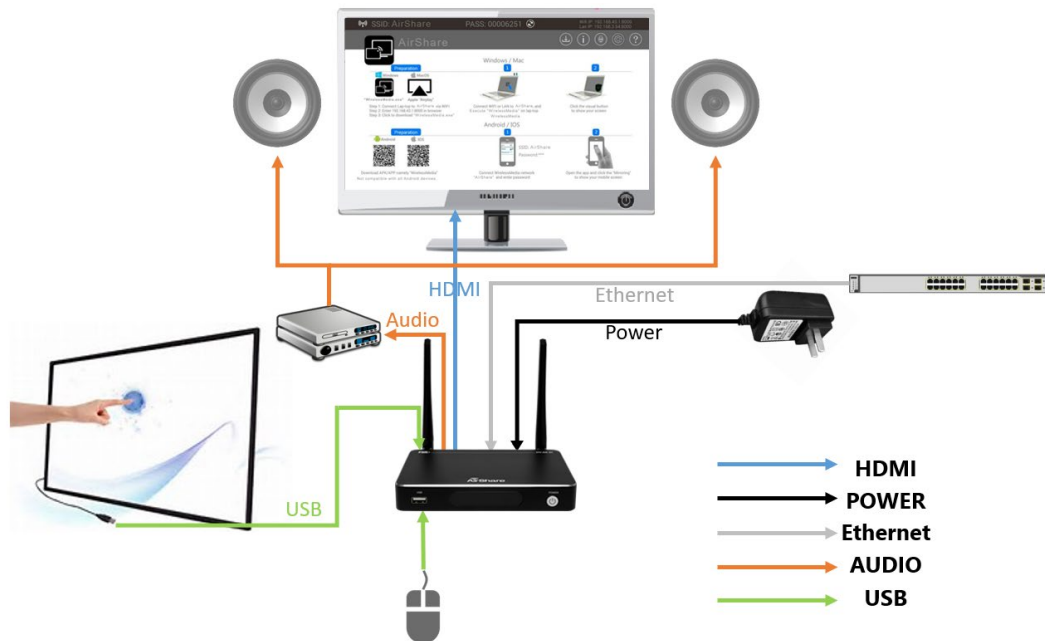
Right-click to back till the Home Page.

For touch screen

Click to select

Press to open the contextual menus, as double-click or click the right button of a USB mouse.

6.9 Wiring Diagram



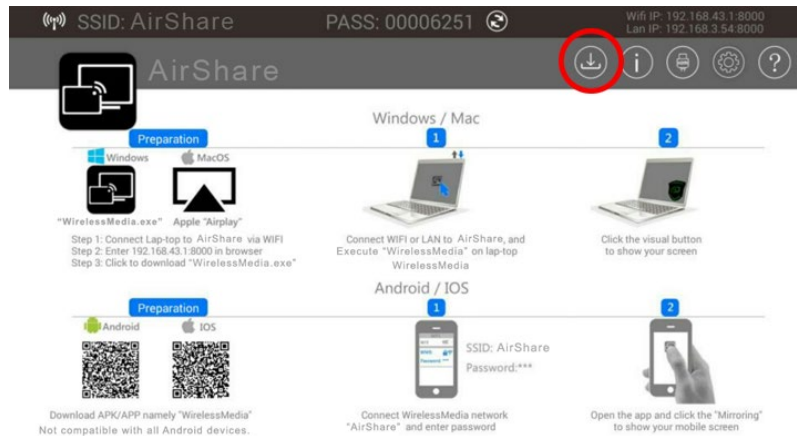
6.10 AirShare Client Software and Client Connection setup

“WMW” PC client software will utilize the PC's WLAN. There are two methods to mirror a Windows PC via Lan IP or Wi-Fi IP of the Base unit.

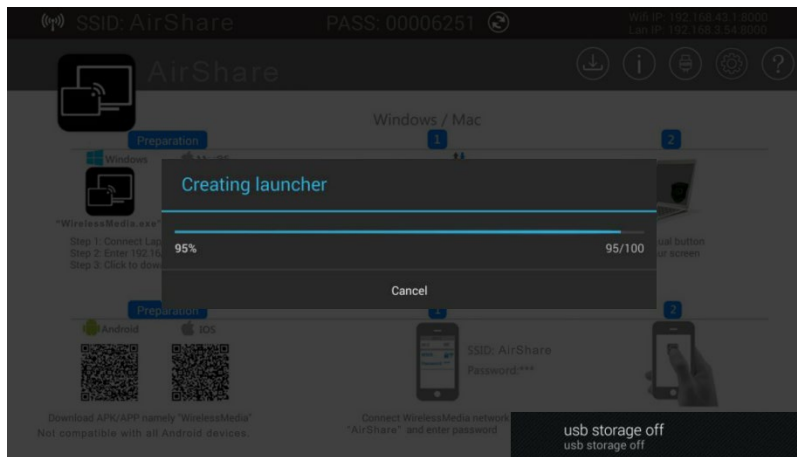
1. Connect the USB Stick to either USB port of base unit.



2. Click the “Download” button in “Home Page” as shown below to create a Launcher for the Client on the USB Stick.



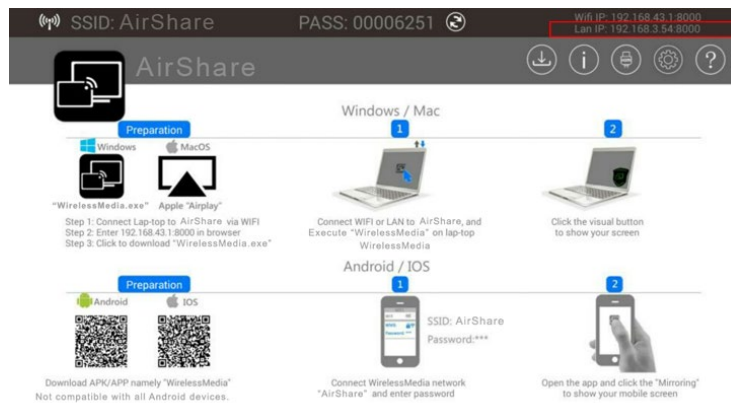
3. The download bar is shown below. When download progress is completed, it will show the message “Succeed to create launcher and the files can be found in directory / UDISK / Launcher”.



4. Unplug the USB stick from the USB port.
5. You will find “WMW” PC client software in the USB stick

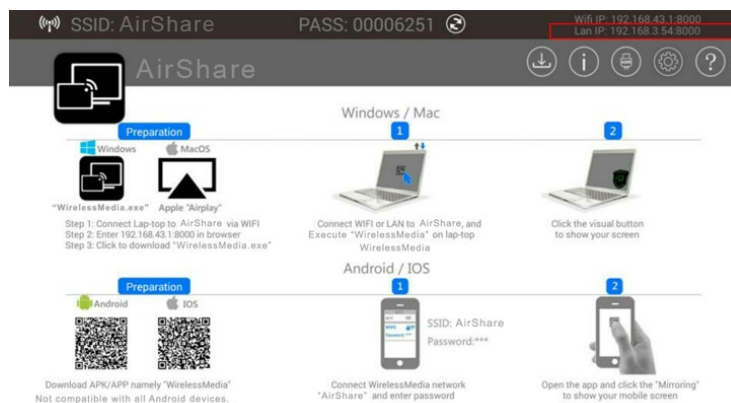
6.10.1 Enable Portable Hotspot (WIFI)

Be sure the AirShare Base Unit is connected to the Hotspot. When *WiFi IP* shows an active IP address, such as 192.168.43.1 it indicates AirShare is successfully connected to the WLAN.

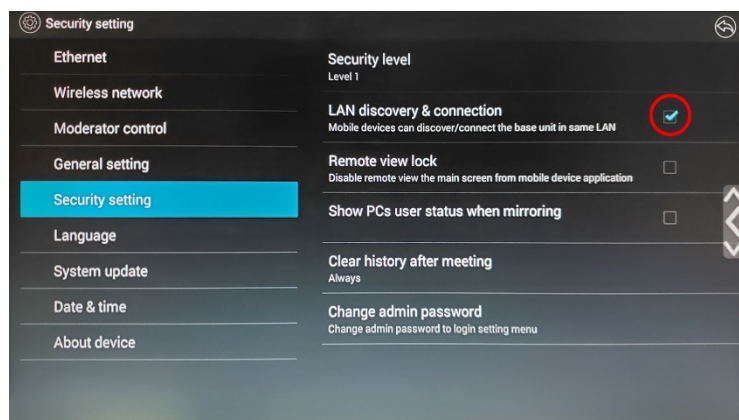


6.10.2 Enable LAN connection

Be sure the AirShare Base Unit is connected to the Network. When *Local IP* shows an active IP address, such like 192.168.3.54, it indicates AirShare is successfully connected to the LAN and get an appointed IP address. When it shows "N/A", it means, the AirShare is not connected to the LAN (Local Area Network) by CAT cable or it failed to get an available IP address by the corporate router.



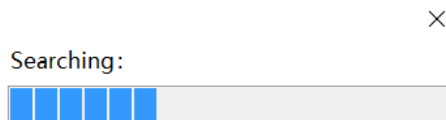
Refer to the "Security Setting" page, check the "LAN discovery & connection" box as shown below



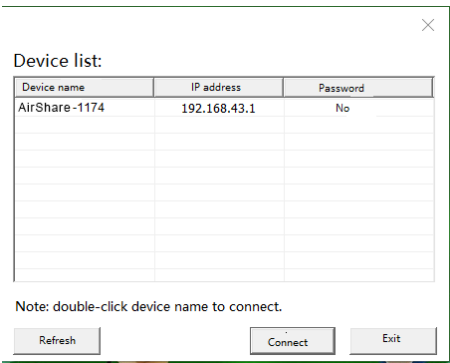
6.11 Client Sharing

6.11.1 For a shared PC/Laptop

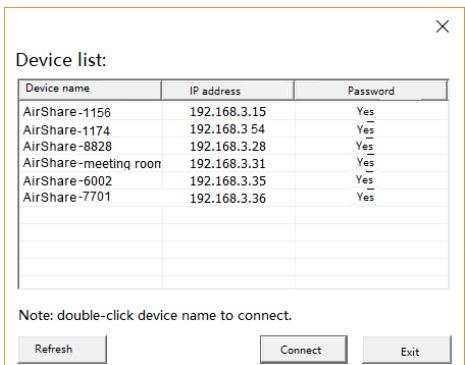
- 1. Copy the “WMW” PC client software into the Windows PC/laptop from USB Stick.
- 2. Execute “WMW” PC client software.
- 3. It will show a search bar as shown below, which means that the PC is searching for the AirShare Base Unit.



- 4. For hotspot (Wi-Fi IP), it will open a device list. Choose the proper AirShare Base Unit after searching,.

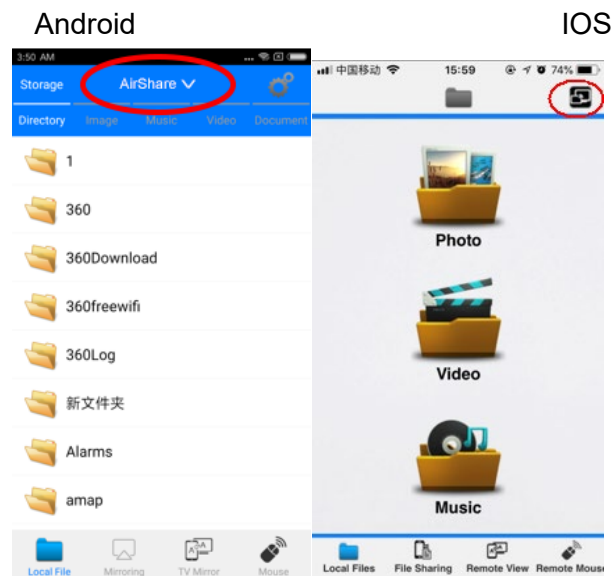



- 5. For LAN IP, it will open a device list. Choose the proper base unit after searching.



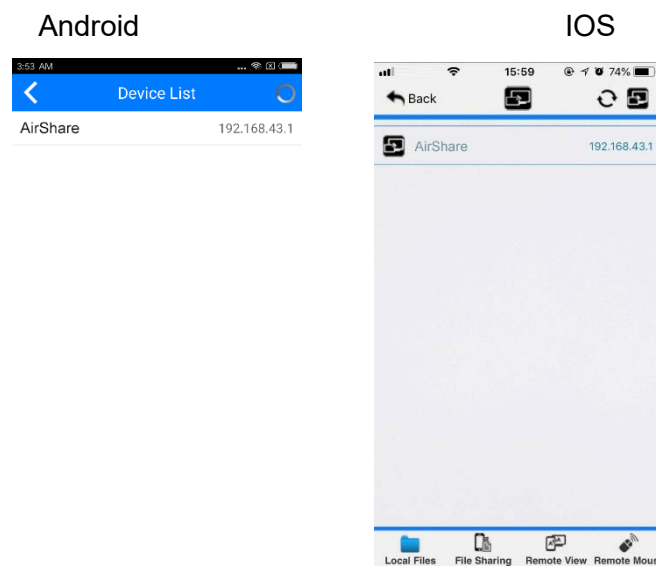
- 6. Connect to the desired base unit by entering the PASS shown in the AirShare Base Unit Home screen, then click “Connect” to share.

6.11.2 For a Shared Mobile Device

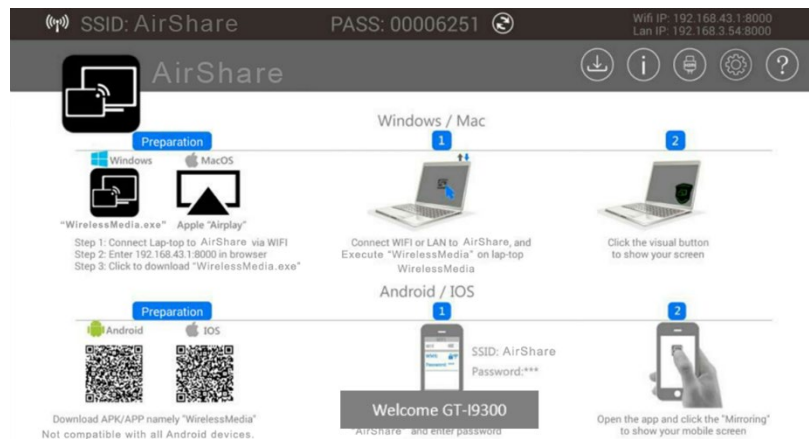
1. Download the WirelessMedia Lite APP or APK
2. Connect your mobile devices to AirShare via Wi-Fi IP (hotspot) or LAN IP.
3. Open the “WirelessMedia Lite” application in your mobile device, and you will see the Home Page of “WirelessMedia Lite” as shown below. and click the device list button “



The image shows two side-by-side screenshots of the WirelessMedia Lite application's home page. The left screenshot is for an Android device, showing a list of folders under the 'Storage' tab. The 'AirShare' button, located at the top right of the folder list, is circled in red. The right screenshot is for an iOS device, showing a home screen with three large folder icons: 'Photo', 'Video', and 'Music'. The 'AirShare' button, located at the top right of the screen, is also circled in red. Both screenshots show a bottom navigation bar with icons for 'Local File', 'Mirroring', 'TV Mirror', and 'Mouse'.


4. Click the found device to connect the AirShare.



- After complete the pairing, it shows OSD “Welcome ***” on the main display home page. For example, if we connect it by a Samsung Galax I9300, it shows a “Welcome GT-I9300”, as shown below.

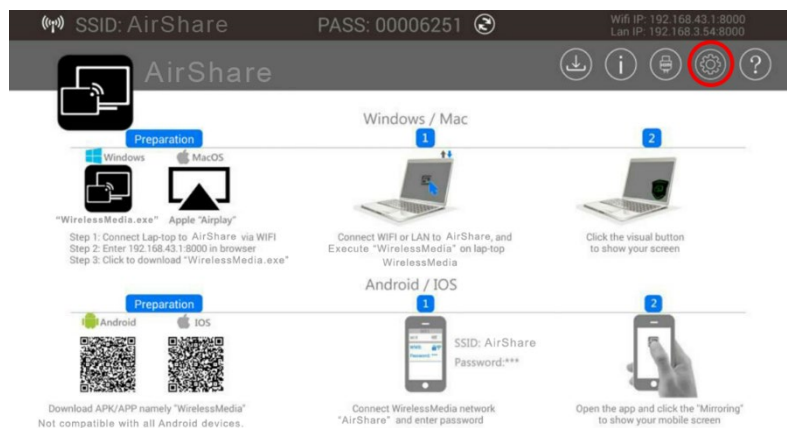


- Now the pairing between “WirelessMedia Lite” application built-in mobile device and AirShare is set up.
- For IOS devices**, Swipe from bottom on desktop, to activate the control center. Click the screen mirroring icon  on your Apply device and select the target AirShare to start mirroring through the AirShare to the main screen.
- For above Android 5.0 devices**, click the devices list to select the target AirShare, and click the Mirroring icon  on main interface of WirelessMedia Lite Apk for Android.

For lower than Android 5.0 devices, click the Local Files icon  to select the sharing picture, music and video.

7 “Setting” Menu

Connect a mouse to either USB2.0 port of the AirShare Base Unit, and click the setting button on the top right corner to open the setting menu of AirShare, which is shown as below:



The main interface of the Setting menu is shown below. It includes Ethernet, Wireless network, Moderator Control, General setting, Security setting, Language, System Update, Date & time and About device.

7.1 Ethernet:

Includes IP address, Ethernet MAC address, Proxy & IP settings, PPPoE & Settings.

7.1.1 IP Address

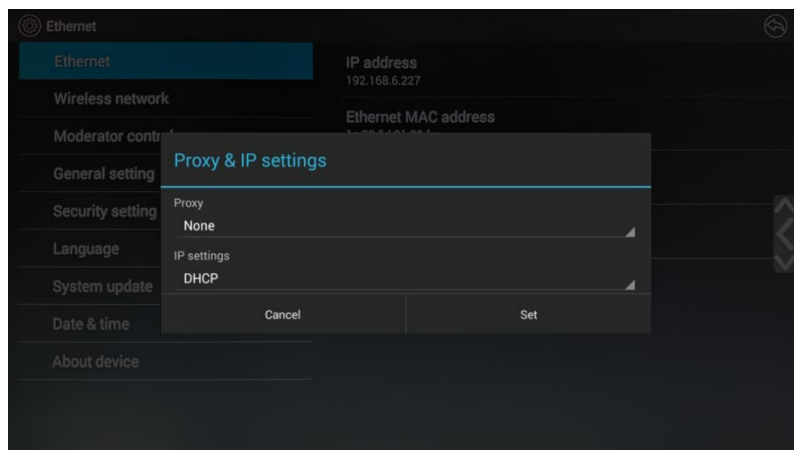
The local IP address of AirShare.

7.1.2 Ethernet MAC address

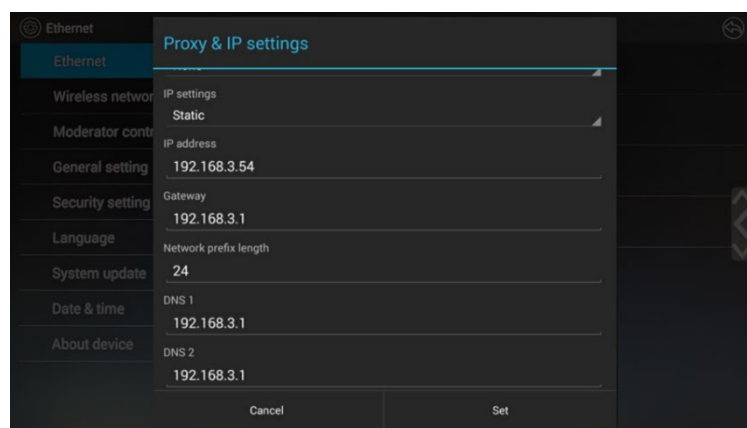
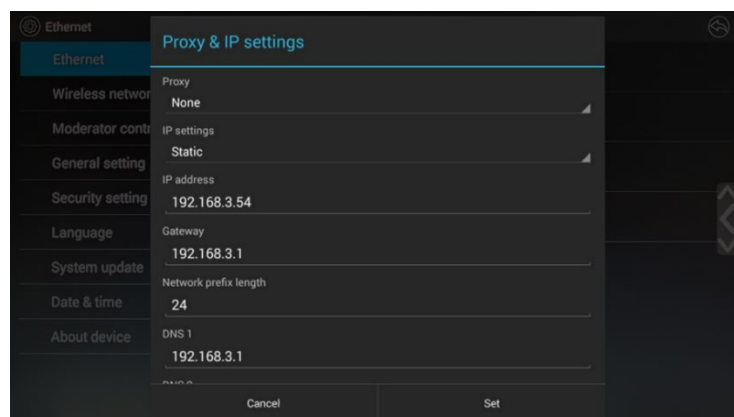
The unique MAC address of AirShare

7.1.3 Proxy & IP settings

- **Proxy:** Click in the check box, to select the check box of “None” or “Manual”

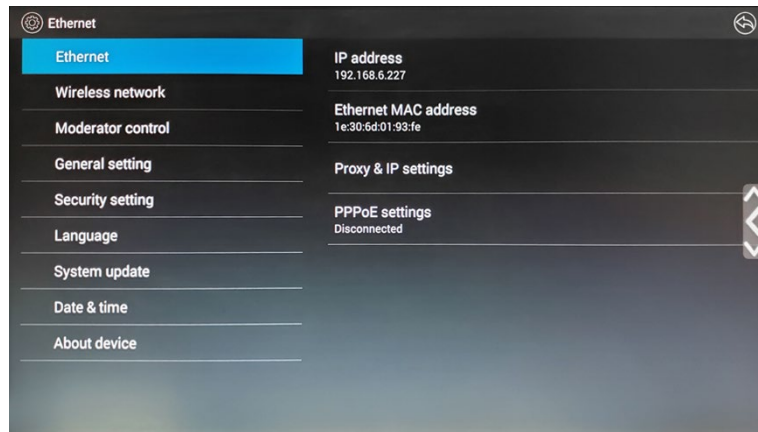


- **IP setting:** Click to select the check box, which includes “Static” or “DHCP”. When set to Static IP address an advance setting page will open-up with the sub menu items below. Click in the input field to add a value.
 - **IP address:** Click in the input field to fill out the 4 fields.
 - **Gateway:** Click in the input field to fill out the 4 fields. Set the default Getway to the IP-address of the router (Must be on the local subnet. it can’t be 0.0.0.0). If no router on the local subnet, then just set it to any IP address on the subnet.)
 - **Network prefix length:** Click in the input field to fill out the number. Default is 24.
 - **DNS1,** Click in the input field to fill out the appropriate for the local.
 - **DNS2.** Click in the input field to fill out the appropriate for the local.
- When finished, click the “Set” to save and return. Or click “Cancel”.

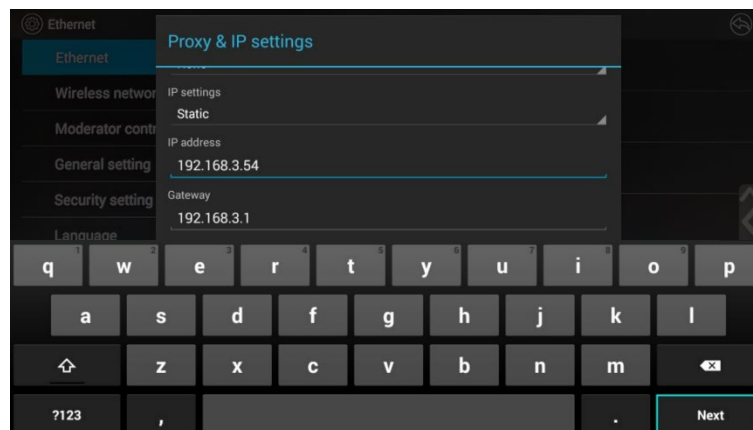


7.1.4 PPPoE settings

Click to configure the PPPoE setting.

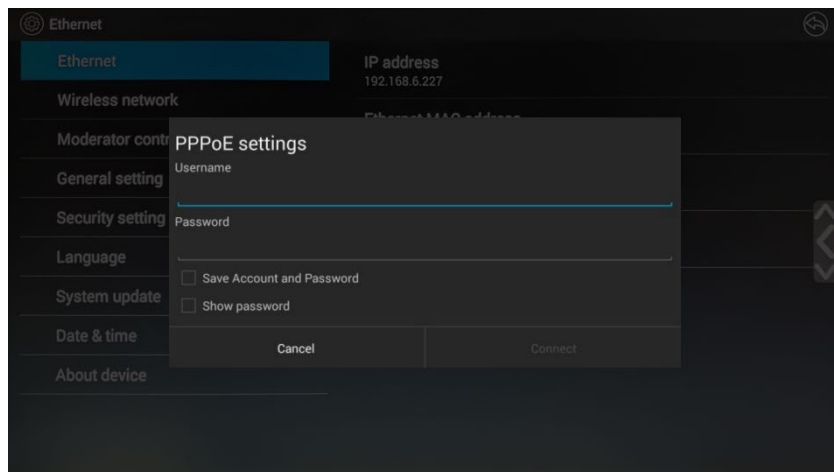


The interface of Proxy & IP settings can be configured, including Proxy on/off, and IP setting, as shown below



PPPoE settings:

- **User name:** Click in the input field to fill out the appropriate user name.
 - **Password:** Click in the input field to fill out the appropriate password.
 - Check box to choose “Save Account and Password” and “Show Password”.
- When finished, click the “Connect” to connect and return. Or, click “Cancel”.



7.2 Wireless network

Includes Portable Wi-Fi hotspot On/Off, Show SSID and PASS when mirroring, Set up Wi-Fi Hotspot, Auto change Wi-Fi hotspot password and Wi-Fi analyzer.

7.2.1 Wireless network configuration wizard

Device Name

Network Config

- Wireless Direct mode

- Wireless Wireless infrastructure mode

- LAN infrastructure mode

Setup WiFi access point

- Frequency

- Channel

- Password

- Show Password Check box

Dual Networks config

- Connected dual network

- Segmented dual network

GUEST& STAFF SSID, which will be shown on the Homepage

7.2.2 Show SSID and PASS when mirroring

It will show the WiFi SSID and Password on the client's screen when mirroring. Turn it on so that other participants can join and mirror.

7.2.3 Auto change Wi-Fi hotspot password



Configure to automatically change Wi-Fi password to a random number after a selected period of time.

Click to set the configuration, including

- **Never:** never change Wi-Fi password.
- **5 minutes:** change Wi-Fi password every 5 minutes.
- **30 minutes:** change Wi-Fi password every 30 minutes.
- **1 hour:** change Wi-Fi password every 1 hour.
- **2 hours:** change Wi-Fi password every 2 hours
- **4 hours:** change Wi-Fi password every 4 hours
- **24 hours:** change Wi-Fi password every 24 hours

7.2.4 Wifi analyzer

Wifi analyzer is an embedded application tool, to provide helpful information for the deployment and Wifi configuration.

The IEEE802.11 a/g/n/ac standard makes use of a part of the 2.4GHz ISM band of the 5GHz U-NII bands.

The 2.4GHz ISM band (industrial, scientific and medical) goes from 2.400 GHz to 2.500GHz and can be used freely by any radio device for industrial, scientific and medical application. This band is also used by several common telecommunications protocols or standards such as Wi-Fi, Bluetooth, ZigBee, RFID devices ... A more comprehensive list of systems authorized on this band can be found at <http://www.efis.dk/sitecontent.jsp?sitecontent=ecatable> for the European Union and at <http://transition.fcc.gov/oet/spectrum/table/fcctable.pdf> for the United States.

The 802.11 standard divides the 2.4GHz ISM band into thirteen 22MHz wide channels, spaced 5MHz from each other (cf. as table 1 below). These channels strongly overlap with each other. The availability of these channels varies from country to country.

Table 1 below depicts the channels enabled for the different regional versions

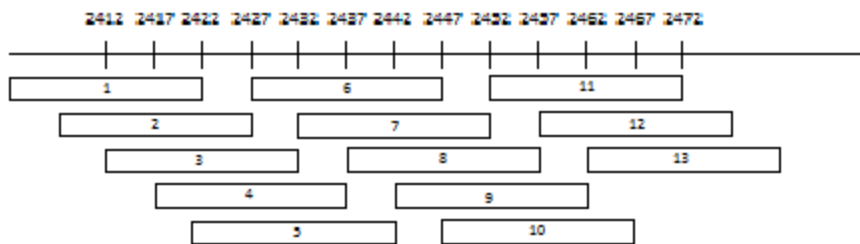


Table 1 Wi-Fi channels in the 2.4GHz band

Channel number	Frequency range (MHz)	regional version			
		NA	EU	JP	CN

1	2401 – 2423	X	X	X	X
2	2406 – 2428	X	X	X	X
3	2411 – 2433	X	X	X	X
4	2416 – 2438	X	X	X	X
5	2421 – 2443	X	X	X	X
6	2426 – 2448	X	X	X	X
7	2431 – 2453	X	X	X	X
8	2436 – 2458	X	X	X	X
9	2441 – 2463	X	X	X	X
10	2446 – 2468	X	X	X	X
11	2451 – 2473	X	X	X	X
12	2456 – 2478				
13	2461 - 2483				

Table 2: Wifi channels in the 2.4 GHz frequency band

The 5 GHz U-NII band covers discontinued parts of the RF spectrum between 5.15GHz and 5.825GHz and allows the use of unlicensed wireless systems. The U-NII band is divided into 4 different sub-bands subjected to specific restriction (cf. Table 3).

Band	Frequency range (MHz)	Number of Wi-Fi channels	Restriction
U-NII 1	5150 - 5250	4	Until recently ¹ , limited to indoor use only
U-NII 2	5250 – 5350	4	Requires use of radar detection
U-NII 2 extended	5470 – 5725	11	Requires use of radar detection
U-NII 3	5725 - 5825	4	

Table 3 U-NII organization

Contrary to the channels defined on the 2.4 GHz band, the channels defined on the 5 GHz band do not overlap each other.

As stated in Table 3, the U-NII 2 and U-NII2 extended sub-bands are also used by several radar systems and can only be used by Wi-Fi access points using the Dynamic Frequency Selection (DFS) and Transmit Power Control (TPC) algorithms. These two algorithms have been defined by the IEEE802.11h standard and specify a set of procedures to detect and avoid interference with radar systems operating in the U-NII 2 and U-NII 2 extended sub-bands.

Currently, the AirShare access points do not support DFS and TPC as specified in the IEEE 802.11h standard and the list of the 5 GHz channels enabled for the different regional variants is displayed at Table 4.

The 5 GHz band is much less used by non Wi-Fi devices than the 2.4 GHz band. Besides, many of the older Wi-Fi devices only support the 2.4 GHz channels, meaning that the 5 GHz band is less crowded.

Moreover, 5 GHz channels do not overlap with each other. **As a result, the use of the 5 GHz channels is most often the preferred choice when installing.**

Channel number	Frequency range (MHz)	regional variant			
		NA	JP	EU	CN
36	5150 – 5170	X	X	x	
40	5170 – 5190	X	X	X	
44	5190 – 5210	X	X	X	
48	5210 – 5230	X	X	X	
149	5735 – 5755	X			X
153	5755 – 5775	X			X
157	5775 – 5795	X			X
161	5795 – 5815	X			X
165	5815 – 5835	X			X

Wi-Fi channel selection considerations

Wireless communication signals travel over the air. Therefore, two devices transmitting at the same time, on the same frequency, and within range of one another, will interfere with each other. When the interference is too strong, the packets transmitted by the Wi-Fi transmitter get so distorted that they are no longer correctly understood by the receiver, and as a result these packets must be re-transmitted. This causes a decrease in the actual data rate achieved between the transmitting and the receiving Wi-Fi devices.

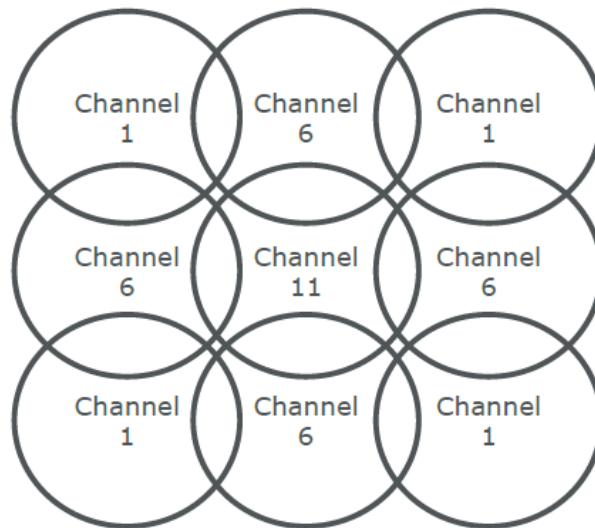
To limit the effect of interference between Wi-Fi devices, the 802.11 standard makes use of the CSMA/CA and Clear-Channel Assessment (CCA) algorithms. Before sending a packet, the device checks whether any other transmission is currently going on. If this is not case, the device can use the channel and sends some packets. Otherwise, the device will do a random back-off and retry to access the channel after a short period of time.

Even with the use of the CSMA/CA and CCA algorithms, the presence of too many Wi-Fi devices on the same channel will have a negative impact on the maximum achievable data rate. Moreover, these algorithms are inefficient against interferences coming from non-Wi-Fi devices or from Wi-Fi devices operating on overlapping channels. Therefore, it is strongly recommended to select a Wi-Fi channel with little to no congestion.

Site survey

Ideally, the selection of the Wi-Fi channel should be made after conducting a wireless site survey. This site survey maps out the different sources of interference and the active RF systems.

Based on the results from the site survey, the least occupied channel can be found and selected for each meeting room.



- In case there are not enough channels available, two or more AirShares can be placed on the same channel. This will of course have an impact on the quality of the link when several clients are sharing simultaneously. In a worst case scenario, three base units placed on top of one another can result in performance issues, as illustrated in Table 4 and Table 5. Table 4 shows a scenario in which all clients are streaming video content, and Table 5 shows a standard office situation where clients share typical office documents or presentations.
- As stated above, the 5 GHz channels do not overlap with each other and are less used by non-Wi-Fi devices than the 2.4 GHz channels. Moreover, 5 GHz signals are more rapidly damped than 2.4 GHz signals. Therefore the use of a 5 GHz channel is recommended. This will limit the impact of an AirShare system on other installed AirShares and on other WLAN users.

clients sharing video	1	2	3
1	Ok	Ok	Ok
2	Ok	Ok	Moderate risk of reduced quality
3	Ok	Moderate risk of reduced quality	Strong risk of reduced quality
4	Ok	Strong risk of reduced quality	Strong risk of reduced quality

Table 4: Connection quality matrix when multiple co-located base units use the same channel at the same time for video streaming **Number of co-located Base Units sharing the same channel**

Number of clients sharing typical office documents	1	2	3
1	Ok	Ok	Ok
2	Ok	Ok	Ok
3	Ok	Ok	OK

4	Ok	Ok	Moderate risk of reduced quality
---	----	----	----------------------------------

Table 5: Connection quality matrix when multiple co-located base units use the same channel at the same time for daily office work (Power point presentation, Excel sheets ...)

Important remarks about the AirShare system installation:

A correct installation of the AIRSHARE base unit is of critical importance to ensure good performance and a robust communication between the clients and the base unit. When installing the AIRSHARE, Please follow the rules below:

- The most favorable setup is a direct line of sight between base unit and clients. Any obstruction will cause the signal to follow a longer propagation path, which can degrade performance.
- Due to the particular radio pattern of the dipole antennas used with the AirShare Base Unit, the antennas should not be placed above AirShare users. In case of ceiling-mounted setup, the advised position for the AirShare base unit antennas is at the side of the meeting room.
- Do not use the AirShare base unit without the shipped antennas. Removing the antenna will cause severe degradation of the signal quality and may result in connection issues between the AirShare base unit and clients.
- Place the base unit in an open emplacement and avoid installing in a metallic shell. A metallic shell (or even shelf) could act as a Faraday cage and block the RF signal. In case this is unavoidable, please use a AirShare rack-mounting kit or external antennas.

Once the AIRSHARE base unit is installed, it is best to monitor the signal strength at the potential AIRSHARE client location. For correct performance, signal strength of -70dBm is needed.

Wi-Fi Troubleshooting

Check the RSSi from the connected clients

Even if the selected channel is free of any interference, a too weak signal coming from the AIRSHARE client can result in an unstable link. In such cases, we recommend:

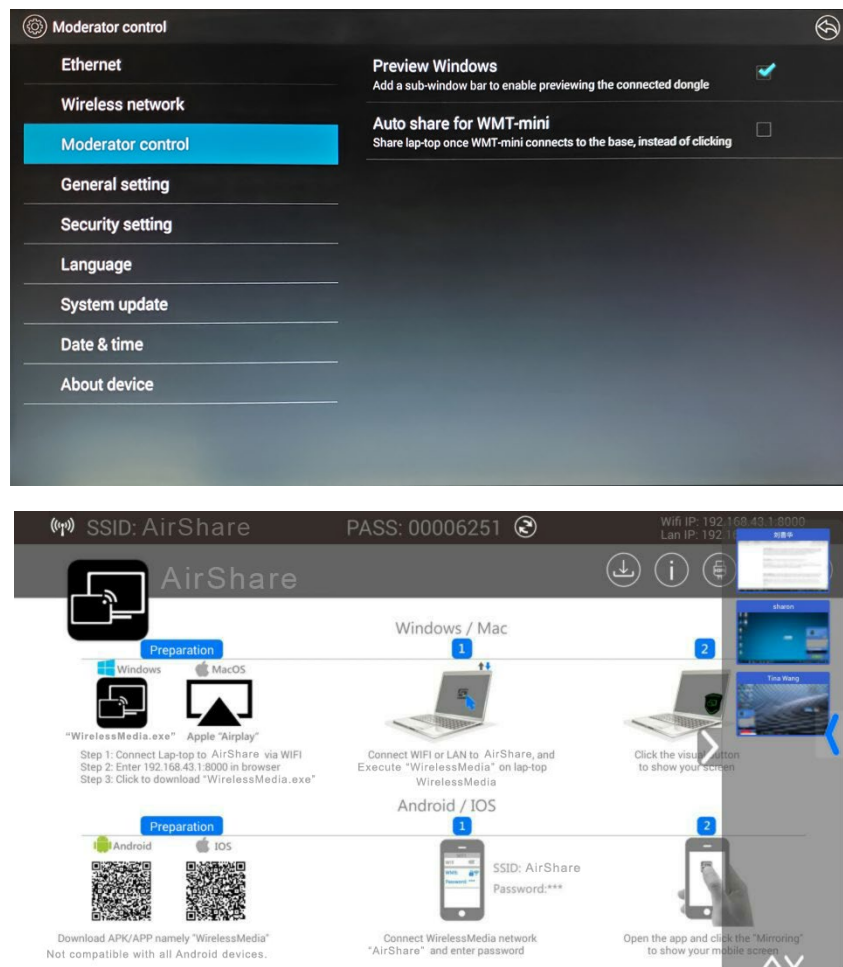
- Measuring the RSSi from the AirShare base unit at different client locations. This can be done by means of a free Wi-Fi survey tool like the Android Application "Wifi analyzer" or another base unit's embedded Wifi analyzer. As explained above, the RSSi should be at least -70dBm.
- Check the signal state reported on the AirShare base unit web interface on the tab "Maintenance" > "Buttons"

If the measured RSSi is too low, check above paragraph "Important remarks about the AIRSHARE system installation".

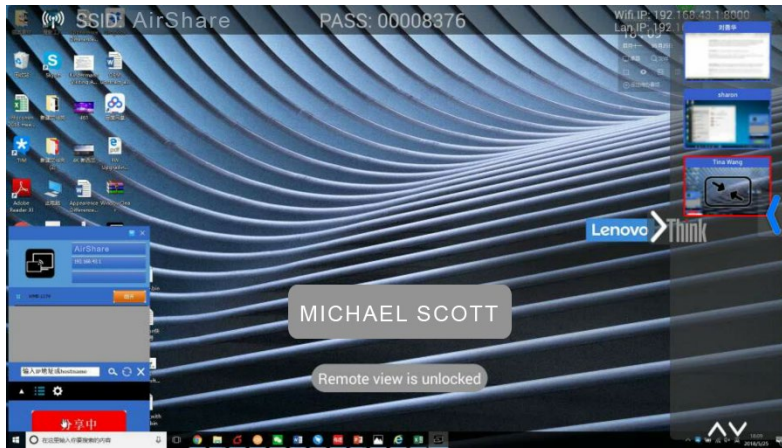
7.3 Moderator Control

7.3.1 Preview Windows

1. Turning on this feature allows the moderator to preview up to six the shared clients desktops on the right bar as shown below.



2. The moderator can select any of the previewed shares by clicking on any of the preview windows using the AirShare Base Unit mouse. The selected preview window will highlight and the shared desktop will be shown on the moderator screen.



7.3.2 Auto share for WMT-mini

Shares the laptop once the WMT-mini device connects to the AirShare Base Unit instead of clicking

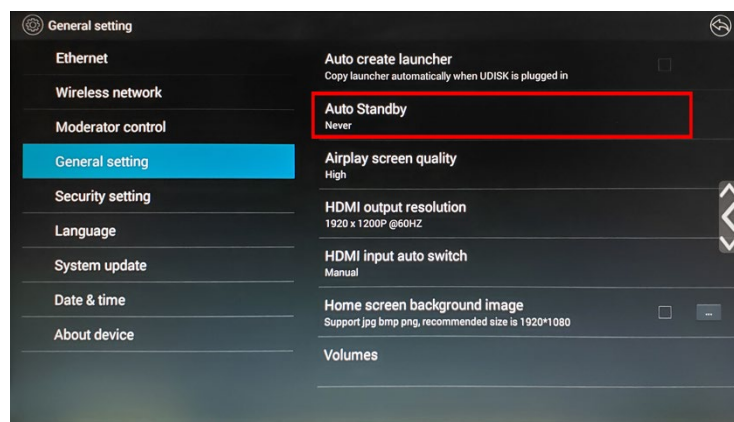
7.4 General setting

Includes: Auto create launcher, Auto standby, Airplay screen quality, HDMI output resolution, HDMI input auto switch, Home screen background image and Volumes.

7.4.1 Auto create launcher

When this box is checked, the launcher files will be saved to a USB Stick when it is plugged into the AirShare USB port.

7.4.2 Auto Standby



Change the time delay before AirShare enters Standby mode (blank moderator screen)

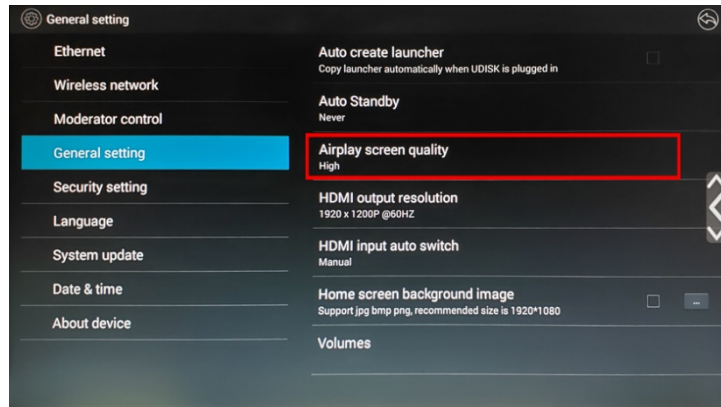
Select standby:

- **Never:** never standby.
- **1 minute:** standby after 1 minute.
- **5 minutes:** standby after 5 minutes.
- **10 minutes:** standby after 10 minutes.
- **15 minutes:** standby after 15 minutes.
- **30 minutes:** standby after 30 minutes.

7.4.3 Airplay screen quality

Click to select the image quality when transmitting apple devices by “Airplay” mode.

- High: 1920x1080
- Medium: 1280x720
- Low: 1136x640



Note:

- Different airplay quality will use a different data rate.
- At lower data rates, lower resolution selection will yield better results.

7.4.4 HDMI output resolution

Click to select the output resolution for AirShare HDMI output port.

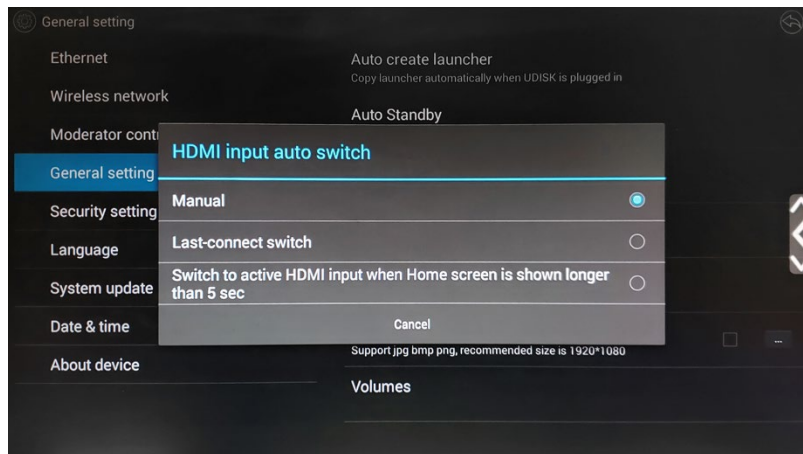
HDMI output resolution:


- **1920x1200P @60Hz**: Set the HDMI output resolution of AirShare at 1920x1200 60Hz.
- **1920x1080P @60Hz**: Set the HDMI output resolution of AirShare at 1920x1080 60Hz.



7.4.5 HDMI input auto switch

Click to select the method used for HDMI input switching.



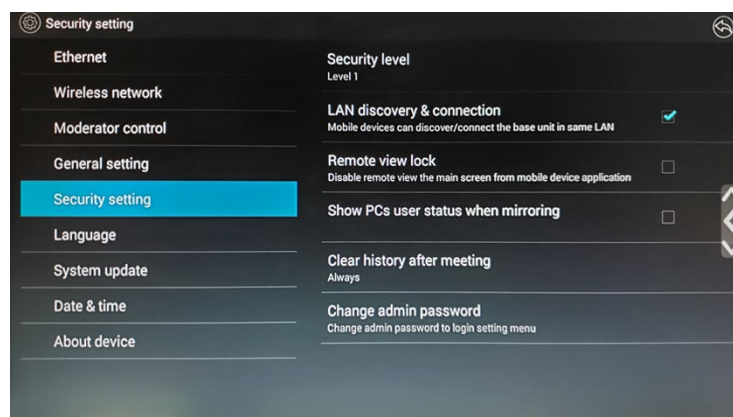
- **Manual:** Switch HDMI input manually via clicking the icon in the home page. 
- **Last-connect switch:** Switches to the last active connection between the HDMI input or the AirShare Base Unit home screen.
- Switch to active HDMI input when an HDMI source is active for longer than 5 sec.

7.4.6 Home screen background image

Check to change the background image of home screen with jpg, bmp, png (recommended size is 1920*1080) via an image saved to a USB stick. Uncheck to return to the default instructional screen.

7.5 Security setting:

Includes LAN discovery & connection, Remote view lock, Clear history after meeting and Change admin password.



7.5.1 LAN discovery & Connection

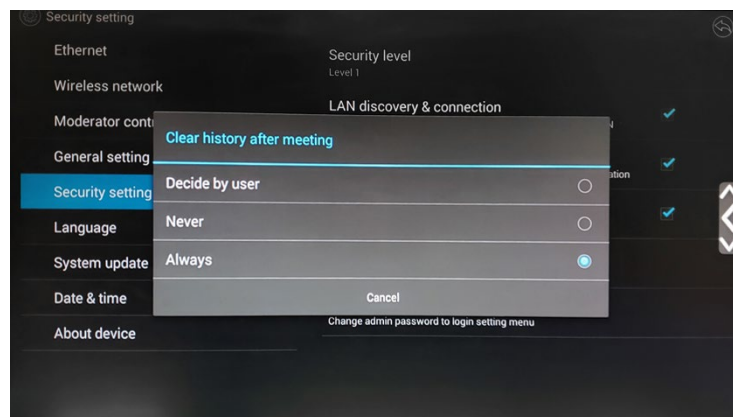
Allows the client PC/Mobile/tablet to discover the AirShare in LAN and connect to it.

7.5.2 Remote view lock

Check / Uncheck to enable/disable the “Remote View” to the “WirelessMedia Lite” APK/APP in order to remotely watch the main screen on the client device. (TV Mirror select button on the client device APP / APK where available)

7.5.3 Clear history after meeting

Set how to deal with the history of meeting: Decide by user, Never and Always.

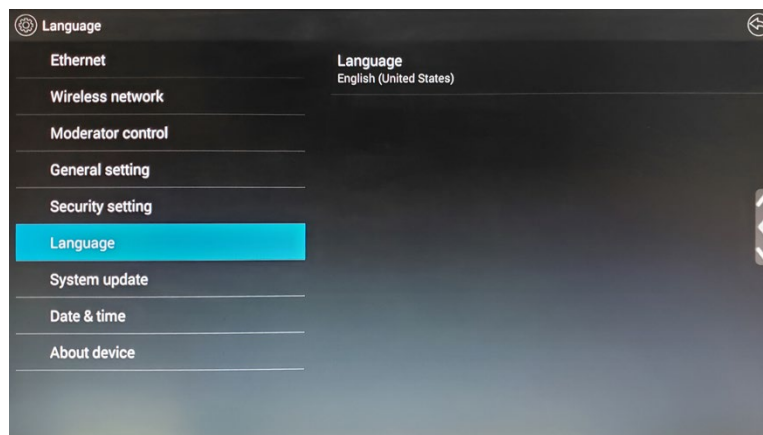


7.5.4 Change admin password

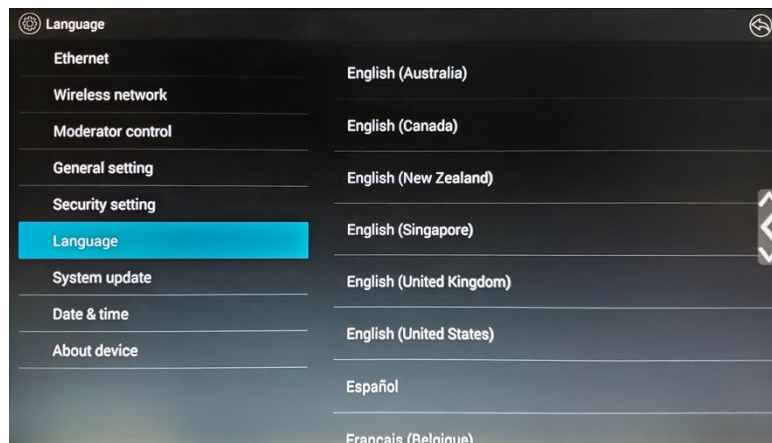
The default password to login setting menu is “admin”, click it to change the password.

7.6 Language

Select Language setting.



- **Language:** Click to select the appropriate language.

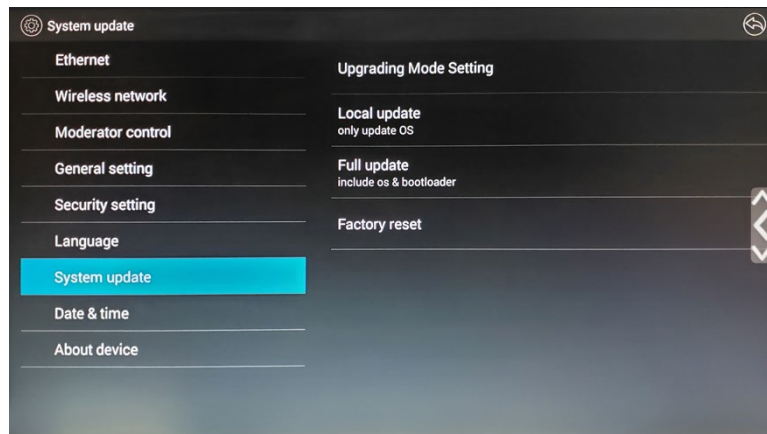


7.7 System Update

NOTE: See chapter 8 for complete details

Select update option and follow on screen instructions. Current files from a USB stick are required and can be downloaded from the FSR website.

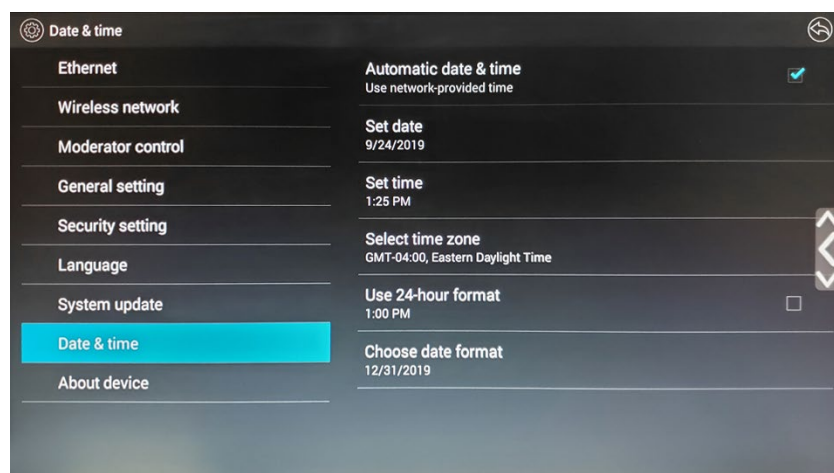
- **Local update:** Includes application software.
- **Full update:** Includes application software and firmware.
- **Factory reset:** Click to factory default setting.



7.8 Date & Time

Includes Automatic date & time, Set date, Set time, Select time zone, Use 24-hour format and Choose date format.

- **Automatic date & time:** Check to use the network provided time as system time of AirShare.
- **Set date:** Click in the input field to fill out the appropriate date.
- **Set time:** Click in the input field to fill out the appropriate time.
- **Select time zone:** Click in the input field to fill out the appropriate time zone.
- **Use 24-hour format:** Click to select use 24-hour format or not.
- **Choose date format:** Click to select the data format.



7.9 About Device

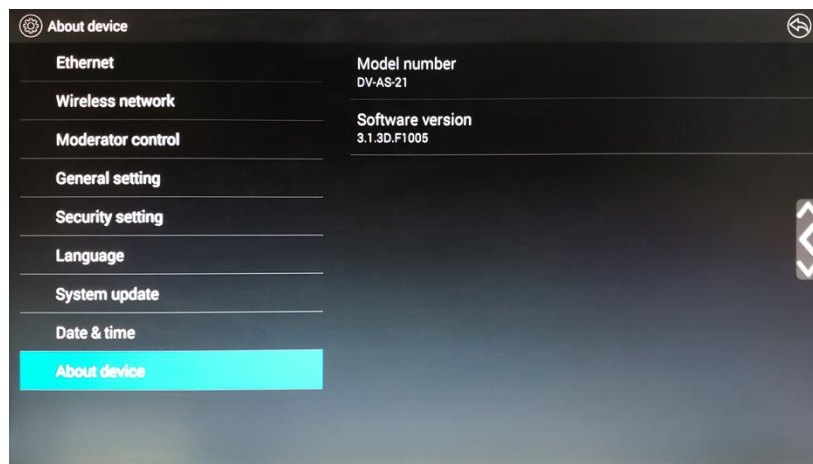
Includes Model number and Software Version

7.9.1 Model number:

DV-AS-21

7.9.2 Software version:

Includes version number# x.x.xx.xxxxx



8 Updating AirShare

Current files from a USB stick are required and can be downloaded from the FSR website.

AirShare includes two methods of updating: “Local Update” and “Full Update”.

“Local Update” will only update the current OS.

“Full Update” will update the OS and boot loader

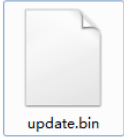
Launcher (PC client software) could be upgraded to the latest FW, while it’s connected to the USB port.

1

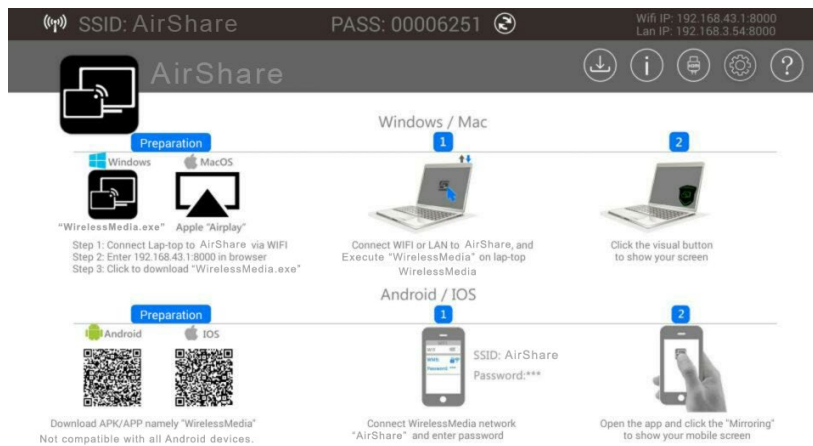
8.1 Upgrading the AirShare Base Unit:

The AirShare Base Unit can be “Full-Updated” through a USB Stick as follows.

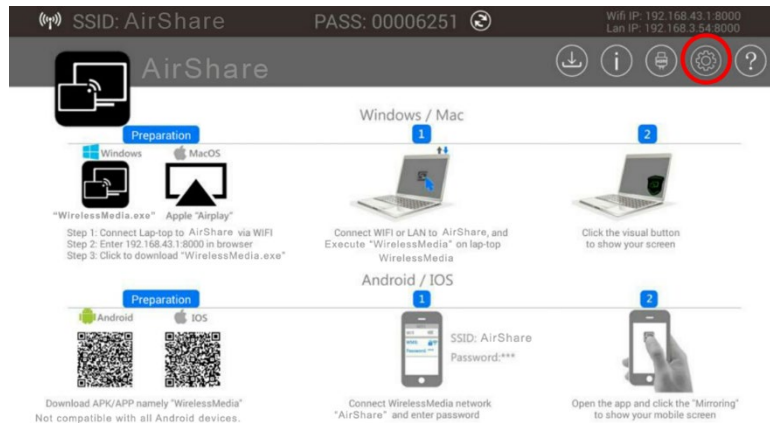
1. Download and copy the updating file “update.bin” to the root directory of the USB Stick.



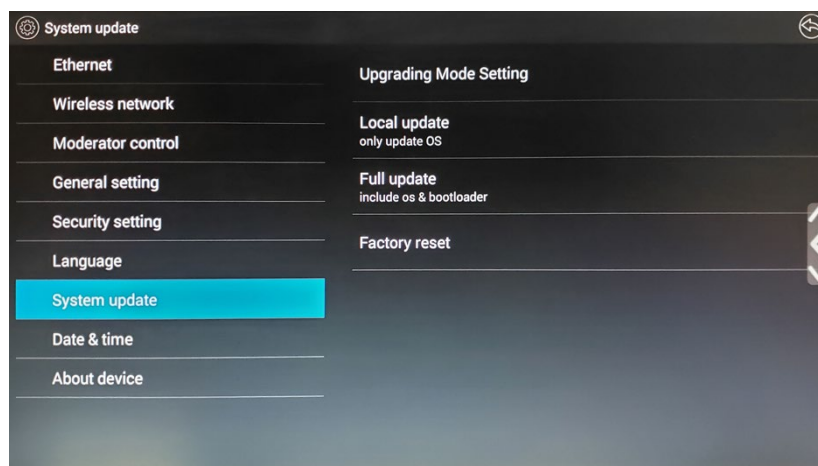
2. Connect the USB Stick to either USB port of AirShare Base Unit.
NOTE: The USB port can only support maximum 500ma. Use a low power USB Stick for upgrading.
3. Connect an HDMI display to AirShare Base Unit HDMI output port.
4. Connect the power adapter to the power socket of AirShare and turn on.
5. The display device displays the home page after normal boot of the device, as shown below:



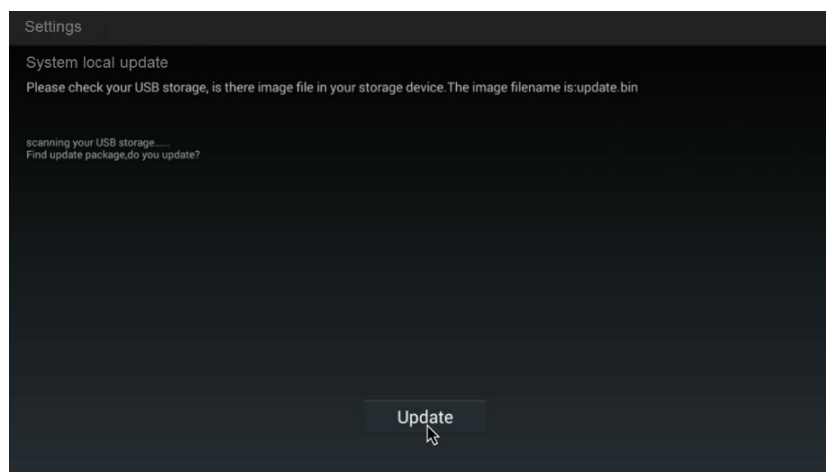
6. Connect a mouse to either one of USB 2.0 port on AirShare, and click the "Setting Button", as shown below



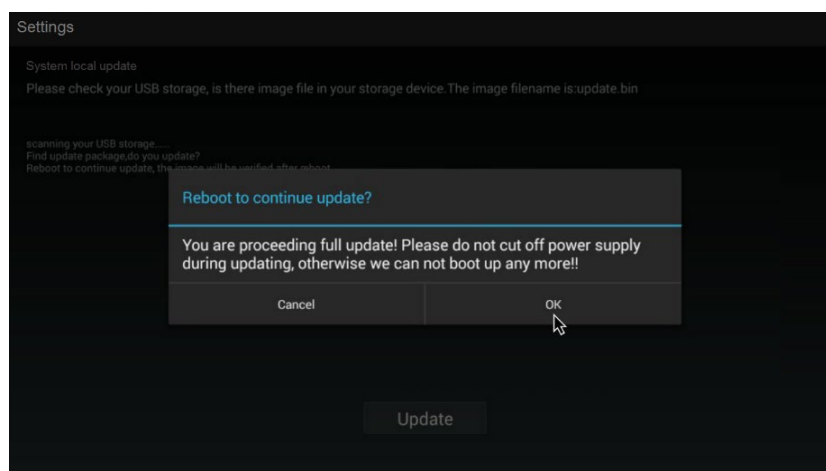
7. On the Setting menu screen, click “System Update” as shown below



8. Click the button “Full update” include os & bootloader as as shown below

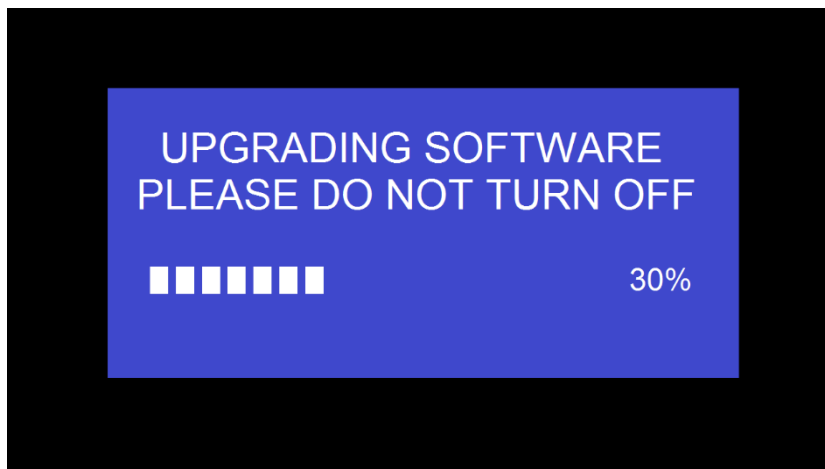


9. After clicking the “Update” button, “Reboot to continue update?” is displayed in the display device, as shown below. Click the “OK”.



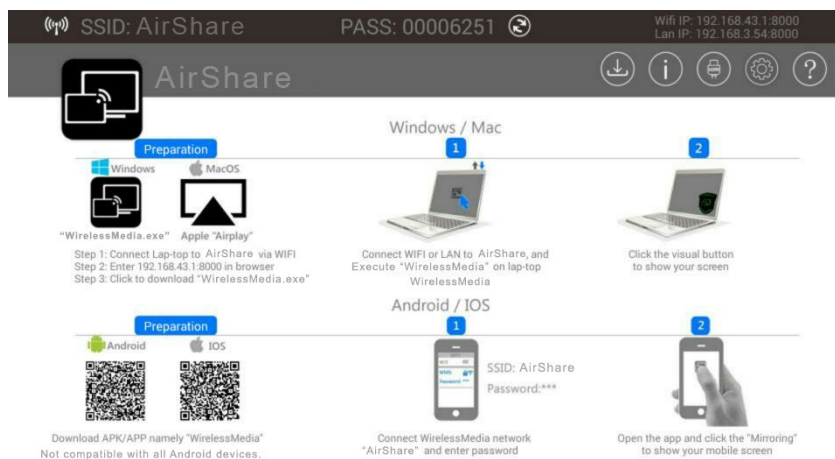
Attention: Do not remove power to the AirShare Base Unit until the upgrading progress is finished or, the firmware will be corrupted.

10. The upgrading progress will be displayed on the progress bar as shown below, and the unit will reboot automatically after complete the updating 100%.



11. If your FW is older than 3.1.3.F1005, perform the FW upgrade twice. The first time upgrading may appear failed. Actually, it upgrades a half only. Power the unit off and on again by plug-out/in the power cord, then upgrade a second time. The second time upgrading probably takes 1-2 minutes while showing a black background. Wait until it shows "100%". When completed the unit will reboot automatically.

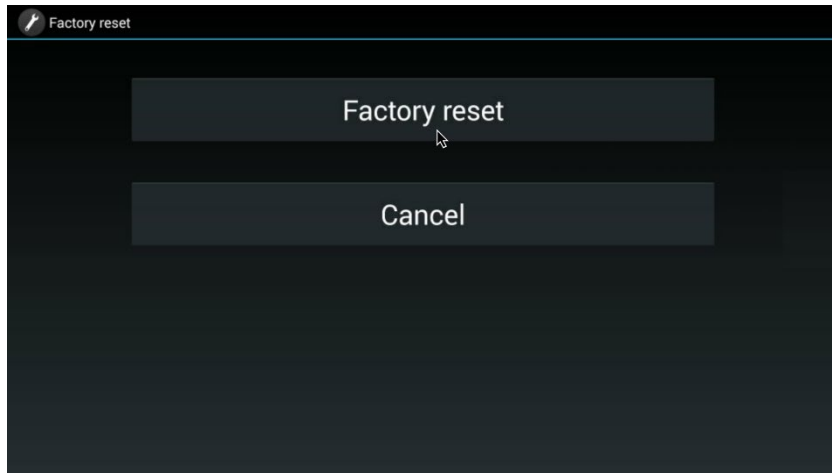
12. At that point, the unit will display the home page as shown below.



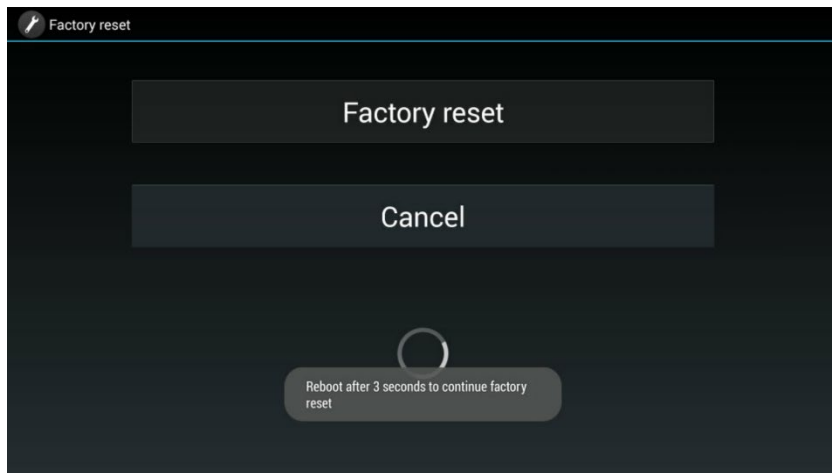
13. Use a pin to push the "Reset" button on the real panel of AirShare to restore to factory default.



14. The screen will appear as shown below. Click “Factory Reset”.



15. It shows “Reboot after 3 seconds to continue factory reset”, as below



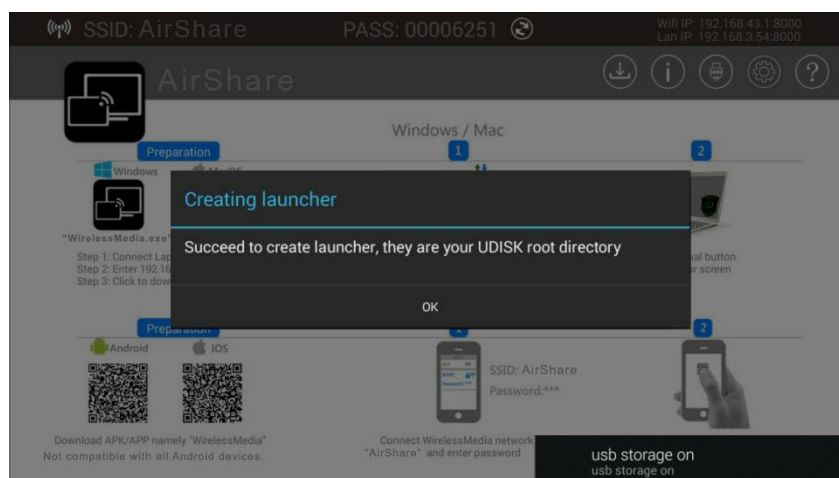
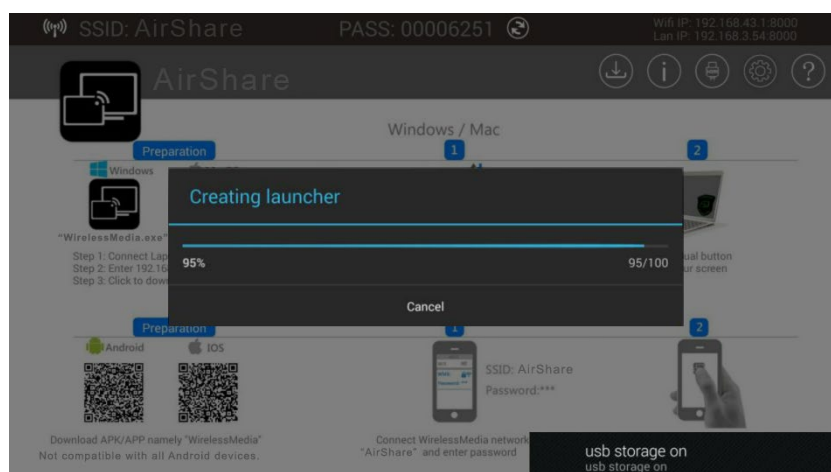
16. After reboot, the home page will appear again as shown below



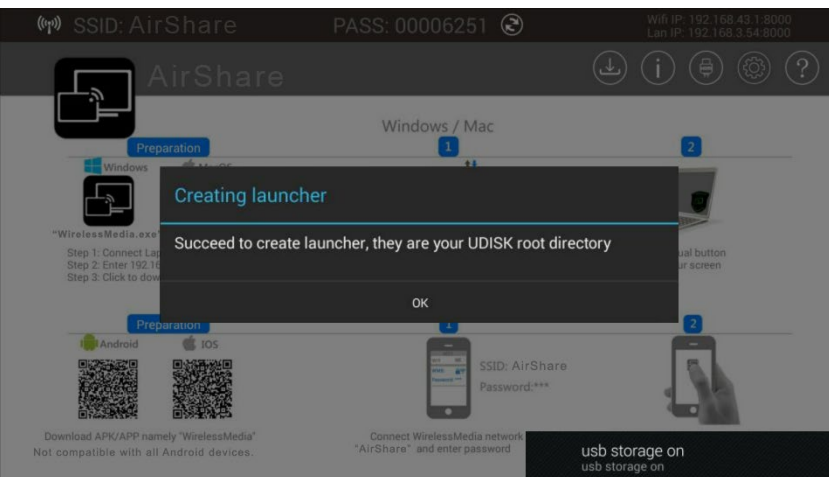
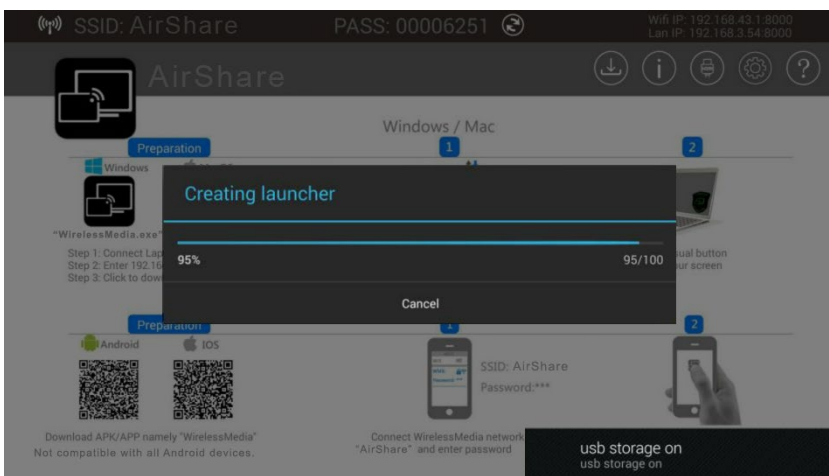
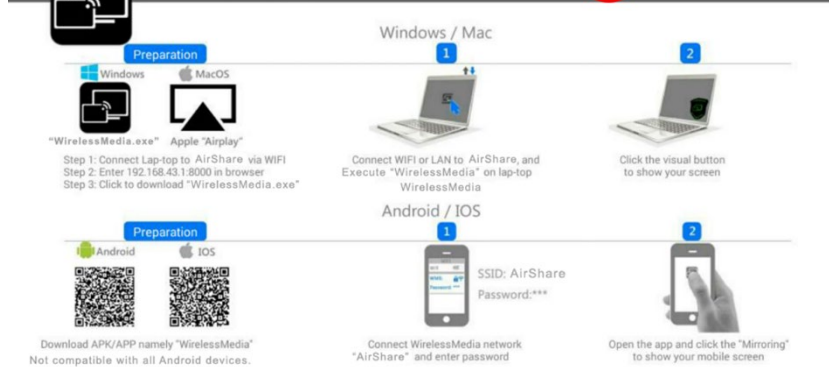
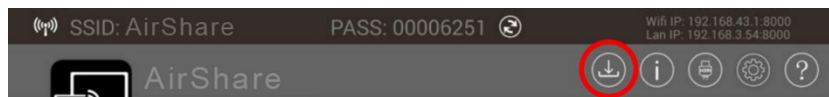
17. At this point, the update process is completed.
18. Click the Setting button to open the menu and confirm that the correct FW version has been installed. E.g. the software version is x.x.x.xxxxx.

8.2 Upgrading Launcher (PC client software):

1. Plug the USB STICK into either of the two USB ports of the AirShare Base Unit. AirShare will automatically copy the launcher to the USB STICK, as shown below if the general setting “Auto create launcher” is turned on



2. Click the download icon on the home screen as below when the Auto create launcher setting is not turned on.



9 Operation

9.1 Transmitting PC desktop

Operating system requirement: Windows XP/Vista/7/8/8.1/10 32 & 64 bit

9.1.1 For Microsoft Windows PC/Laptop

- 1) Execute “WMW” exe.
- 2) For Windows 7, a dialog box may ask for user permission to run the WirelessMedia Lite software. Click to run it.
- 3) For Windows 10, or MAC PC/Laptop, you need to open up the added WirelessMedia Lite disk and click the exe file to run it.
- 4) You see a message box showing up at the right bottom corner of desktop “Ready to share”. Click it to start mirroring the client desktop on the Moderator screen.
- 5) Click again to remove the client desktop from the Moderator screen.
- 6) Setting icon of UI, including:
 - a) **Extended Desktop:** check to transmit the extended desktop of PC/Laptop, or as default set, to mirror the desktop of PC/laptop.
 - b) **Preserve Aspect Ratio:** check to keep the original aspect ratio to display on the main screen
 - c) **HDMI input**
 - d) **Remote view lock**
 - e) **Super low latency of mouse**
- 7) A WirelessMedia Lite status icon is added to the status bar at the right bottom corner. Right click it to open up the setting of WirelessMedia Lite, including
 - a) About WirelessMedia Lite: click to check the software version of AirShare.
 - b) Exit

9.2 Transmitting MAC OS PC/Laptop and IOS mobile device

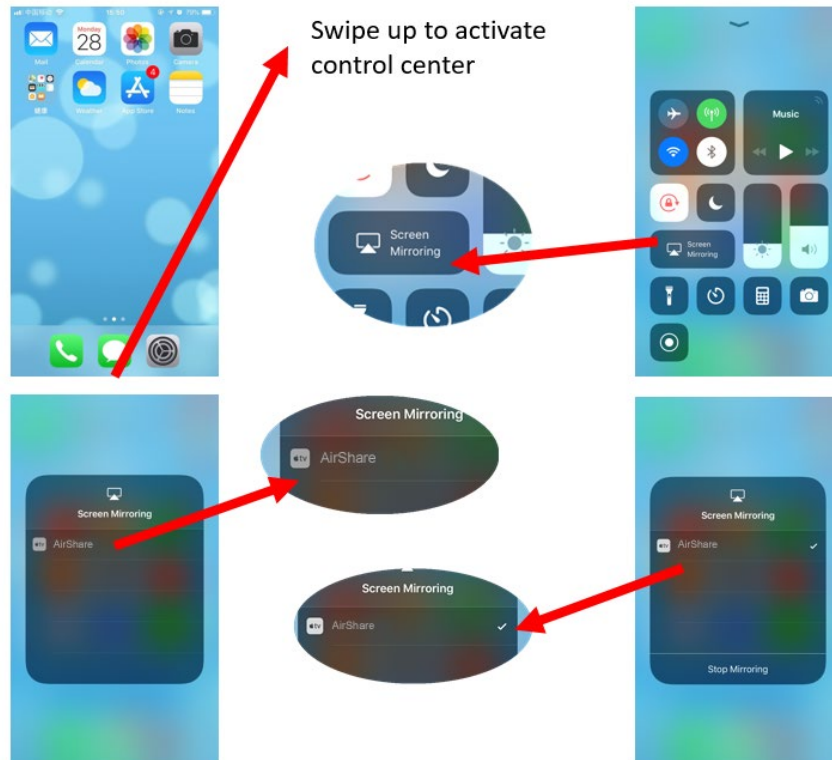
Airplay/Screen Mirroring: AirShare Base Unit supports “Airplay”/“Screen Mirroring” receiver, which enable mirroring the desktop of your Apple device to the screen mirroring receiver, like Mac OS PC, iPhone, iPad etc.

Swipe from bottom on desktop, to activate the control center. Click the airplay/screen mirroring icon



on your Apply device and select the receiver device AirShare and connect it. Then you could mirror your screen content wireless through the AirShare to the main screen.

9.2.1 How to use airplay/screen mirroring?



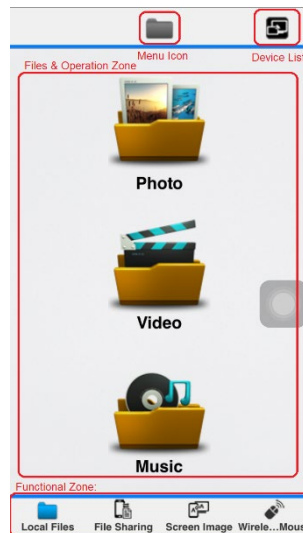
9.2.2 “WirelessMedia Lite” App for IOS

Operating system requirement: iOS 7.0 and later

1) Open the “WirelessMedia Lite” application.



2) The main interface of WirelessMedia Lite is shown below.



Functional Zone:

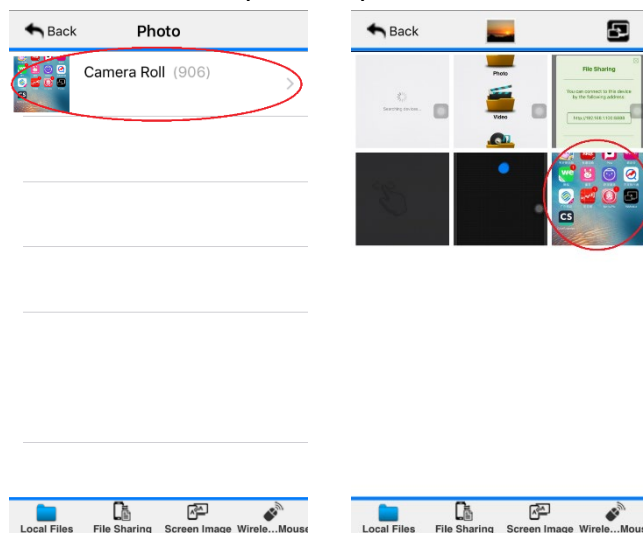
- **Local Files:** Can transmit the local file, including Photos, Video, Music to the receiver to playback.
- **File Sharing/File Exchange:** Can setup a storage for the PC/Laptop to access/transmit files to the mobile device.
- **Screen Image/Remote View:** Can remote video the active signal on main screen, and control the PC/Laptop device like a mouse.
- **Wireless Mouse/Remote Mouse:** Can control the DV-AS-21 or the sharing device, like an air-mouse.

Menu Icon: show the directory menu icon, like photo, video, music, file sharing

Device list: Click to discover the available DV-AS-21 AirShare Base Units to connect them.

File & Operation Zone: Select the file to transmit and do the control operation when available.

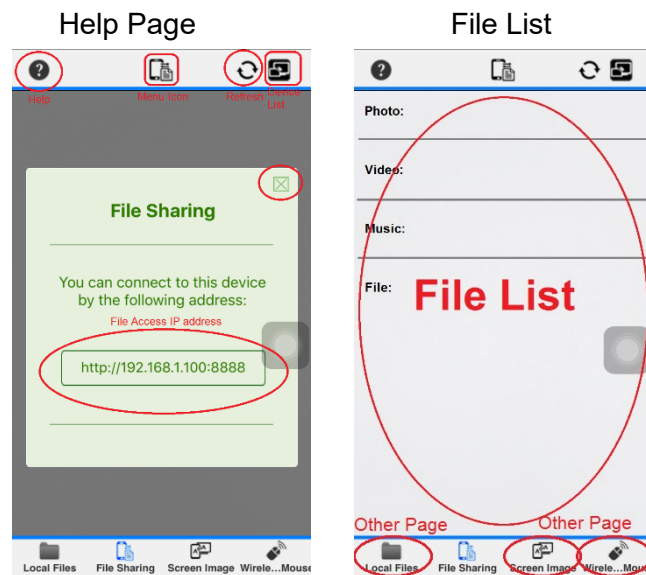
3) Local Files: select the file stored in local Iphone / Ipad, as shown below



4) File Sharing/File Exchange: Click the File sharing/File exchange to check the IP address.

Close the File Sharing dialog box as shown below, to enter into the File List, which is a new generated File List stored under WirelessMedia Lite APP in IOS mobile.

To access the files, you can enter the IP address on the PC/laptop's web browser while your PC/Laptop has connected to the AirShare by hotspot connection or LAN connection.

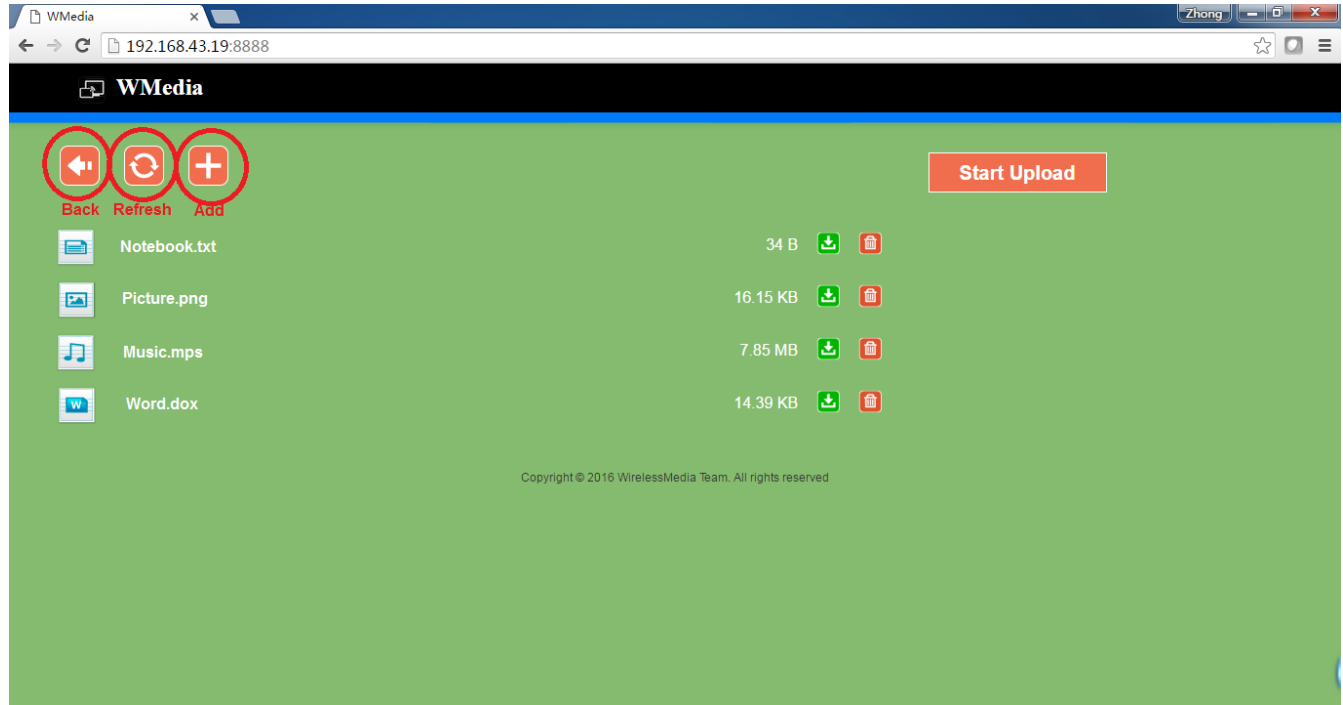


Help: to open up the IP address page.

File List: to select the photo, video, music, file to transmit to the main screen.

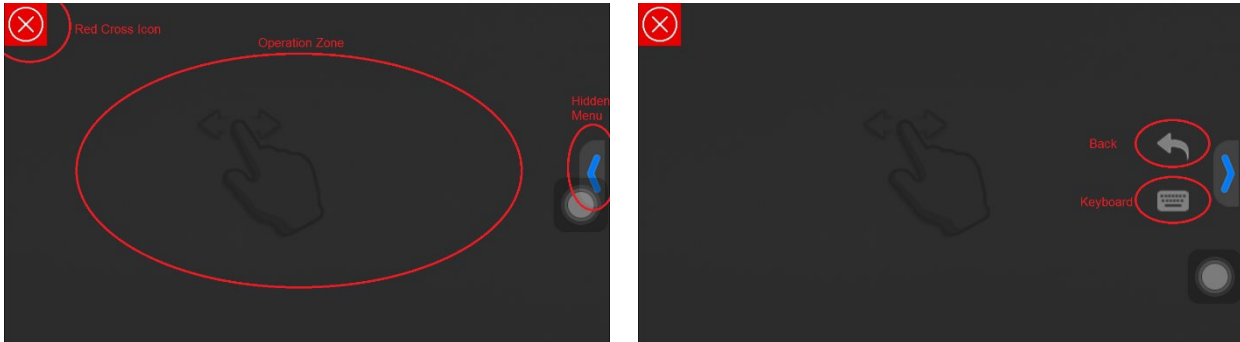
Other page: Click the other functional icon to return File Sharing/File Exchange.

PC/Laptop page



5) Screen Image/Remote View: Click the Screen Image/Remote View to remotely view/watch what's showing on the main screen.

When there is no connected AirShare, it shows



Red Cross Icon: return to the main interface of WirelessMedia Lite.

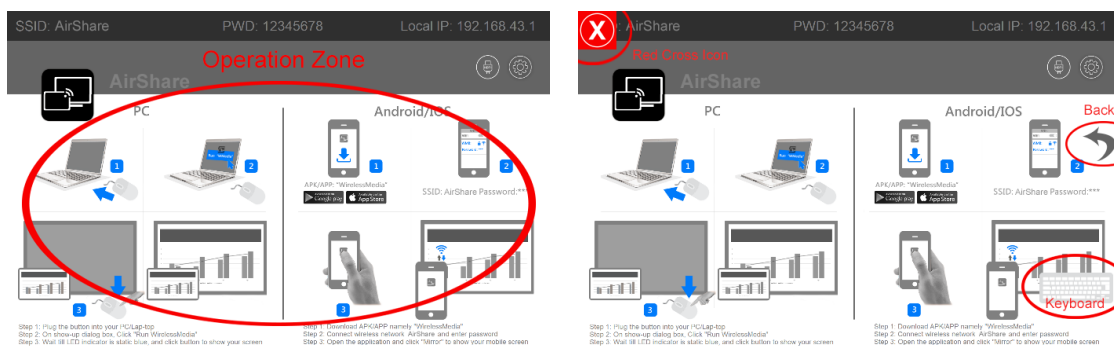
Operation Zone: Zone to remote view the active signal and control it as a mouse.

Hidden Menu: Click to open the hidden function features, including Back and Keyboard when available.

Back: It sends a “Return” command to the DV-AS-21 to go back to the previous directory menu.

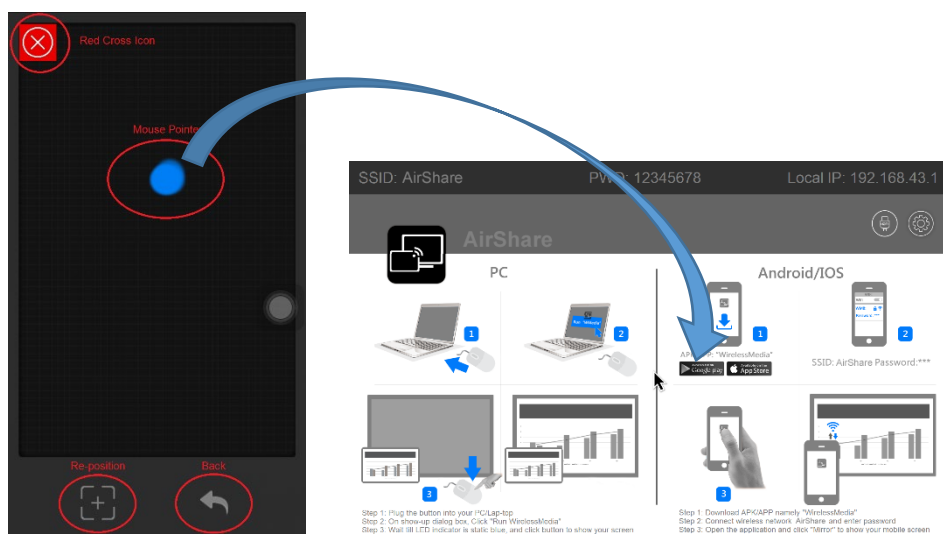
Keyboard: Open the keyboard to enter character/number.

When there is an active signal showing on the main screen, you’ll see it, and click the screen to control it as a mouse, as shown below



Click the Red Cross icon to return.

6) Wireless Mouse: Click the Wireless Mouse to generate a mouse pointer to control the AirShare.



Mouse Pointer: represent the relative position of the mouse on the main screen.

Re-position: reset the position to be the center of the screen.

Back: It sends a “Return” command to the AirShare to go back to the previous directory menu.

Red Cross Icon: return to the main interface of “WirelessMedia Lite”.

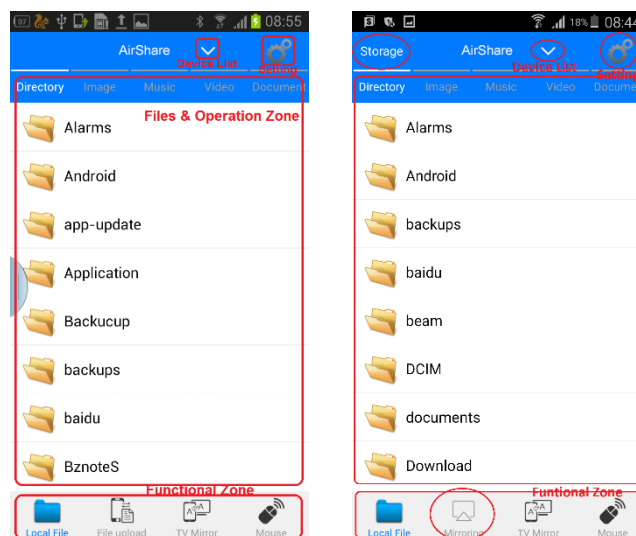
9.3 Transmit Android device wireless

9.3.1 “WirelessMedia Lite” App for Android

- 1) Open the “WirelessMedia Lite” application.



- 2) The main interface of WirelessMedia Lite is shown as below. It includes the features including
Android 4.x Android 5.x



Functional Zone:

- **Local Files:** Can transmit the local file, including Photos, Video, and Music to the receiver to playback.
- **File upload/File Exchange/Storage (for Android 5.x):** Can setup a storage for the PC/Laptop to access/transmit files to the mobile device.
- **TV Mirror /Remote View:** Can remote video the active signal on main screen, and control the PC/Laptop device like a mouse.
- **Mouse/Remote Mouse:** Can control the AirShare or the sharing device, like an air-mouse.

Menu Icon: show the directory menu icon, like photo, video, music, file sharing

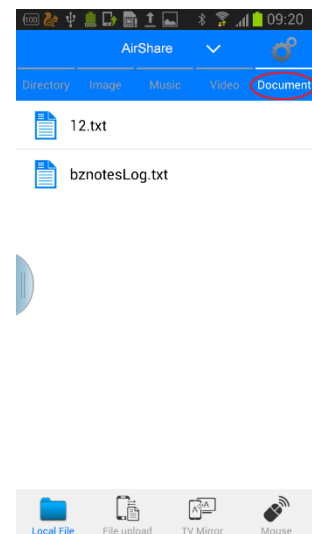
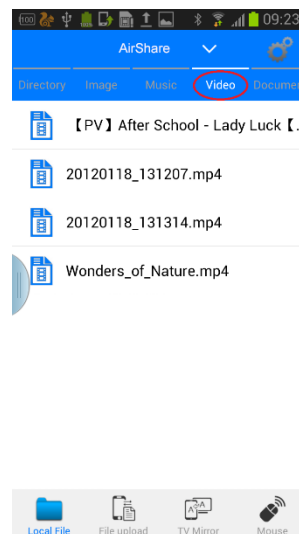
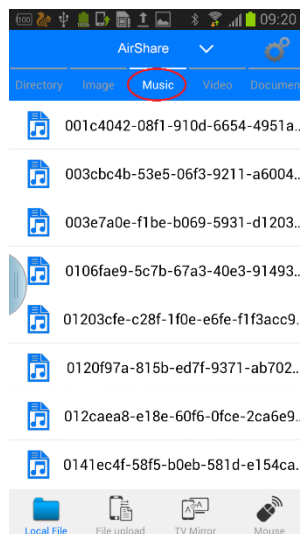
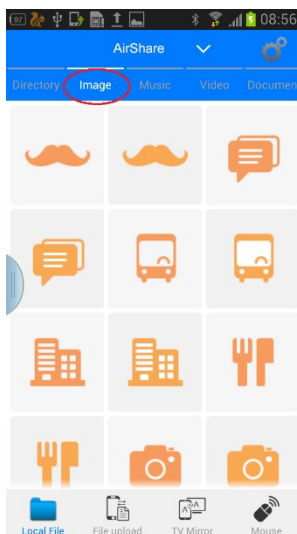
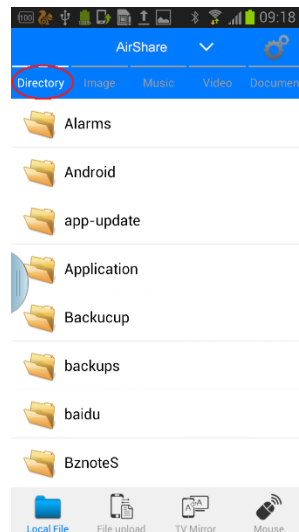
Device list: Click to discovery the available DV-AS-21 to connect them.

File & Operation Zone: Select the file to transmit and do the control operation when available.

Attention:

Android Mirroring feature could only be achieved on the Android 5.0 and above OS device.

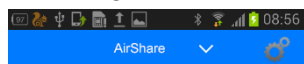
3) Local Files: select the file stored in local Iphone / Ipad, as shown below



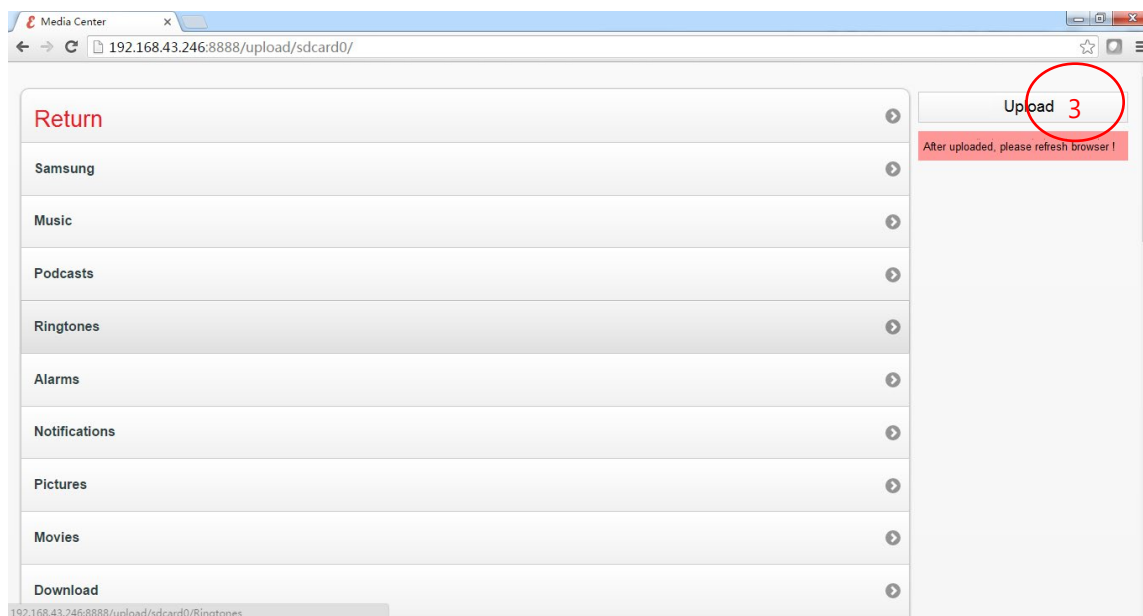
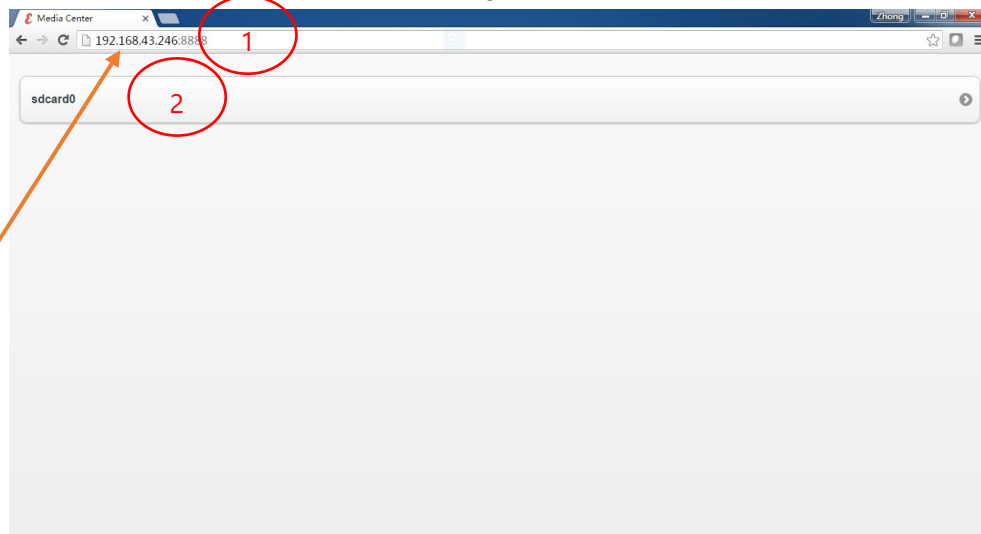
4) File Sharing/File Exchange: Click the File sharing/File exchange to check the IP address. Then enter the IP address by our PC/laptop's web browser.

- 1) Enter the IP address on the web browser
- 2) Click the root directory "sdcard0"
- 3) On the open-up directory, click the "upload" to select the file from local PC/Laptop to be uploaded.

Help Page



PC/Laptop Access Page



Help: to open up the IP address page.

File List: to select the photo, video, music, file to transmit to the main screen.

Other page: Click the other functional icon to return File Sharing/File Exchange.

5) Screen Image/Remote View: Click the Screen Image/Remote View to remotely view/watch what's showing on the main screen.

When there is no connected AirShare, it shows:



Red Cross Icon: return to the main interface of WirelessMedia Lite.

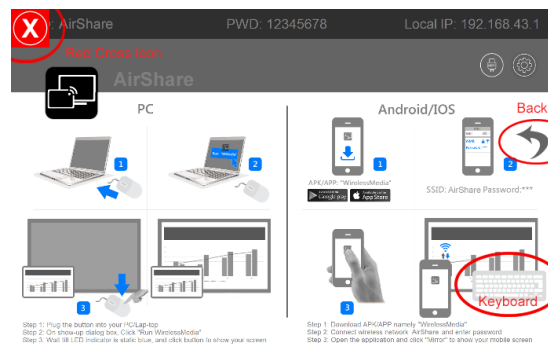
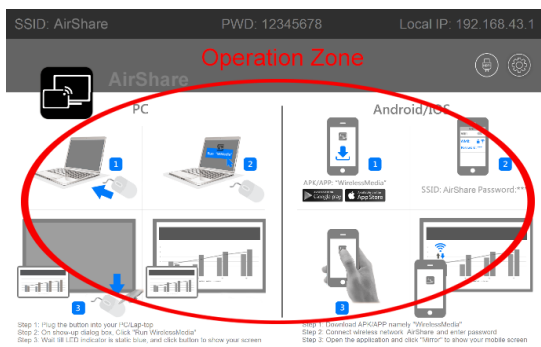
Operation Zone: Zone to remote view the active signal and control it as a mouse.

Hidden Menu: Click to open the hidden function features, including Back and Keyboard when available.

Back: It sends a “Return” command to the DV-AS-21 to go back to the previous directory menu.

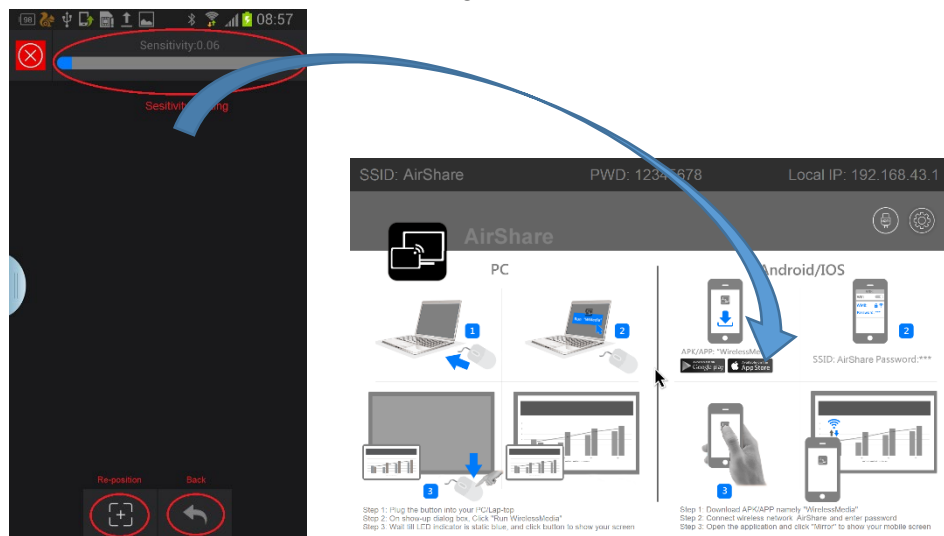
Keyboard: Open the keyboard to enter character/number.

When there is an active signal showing on the main screen, you’ll see it, and click the screen to control it as a mouse, as shown below



Click the Red Cross icon to return.

6) Wireless Mouse: Click the Wireless Mouse to generate a mouse pointer to control the AirShare.



Mouse Pointer: represents the relative position of the mouse on the main screen.

Re-position: reset the position to be the center of the screen.

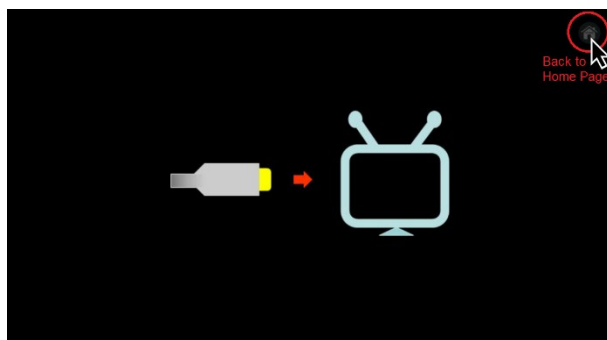
Back: It sends a "Return" command to the WMB1 to go back to the previous directory menu.

Red Cross Icon: return to the main interface of "WirelessMedia Lite".

9.4 HDMI Input Select

When on the Home Page, it's used as AirShare receiver for receiving PC or Mobile devices. Connect a mouse to either USB 2.0 or DV-AS-21 or use the WirelessMedia Lite Wireless Mouse/Remote Mouse to click the local HDMI input icon, as shown below.

When on local HDMI input, it's used as HDMI switcher. Connect a mouse to either USB 2.0 or DV-AS-21 or use the WirelessMedia Lite Wireless Mouse/Remote Mouse to click the Back to Home Page icon, as shown below.



10 WIFI Recommendation Setting

10.1 Check the WIFI config on AirShare (See WiFi Analyzer section)

The WIFI analyzer software in the AirShare Base Unit can be used to check the WIFI environment, in order to select an unused WIFI frequency between 2.4GHz and 5Hz, and the WIFI channel as shown below.

2.4GHz: 1, 2, 3, 4, 5, 6, 7, 8, 9, 10, 11

5GHz: 36, 40, 44, 47, 149, 153, 157, 161, 165

10.2 Check the WIFI RSSI on PC or Mobiles

Use the WIFI analyzer software by placing the AirShare Base Unit it at the same place as the PC or mobile client. Measure the WIFI RSSI (Received Signal Strength Indicator). The RSSI should be above -70dB for a stable signal transmission. If not, see trouble shooting---*Bad wireless connection* congestion.

11 Troubleshooting

Trouble	Cause	Solution
See "SSID: N/A and Password: N/A" on the HomePage, and can't find the AirShare's WIFI by mobile device	Hotspot of AirShare is not turned on.	Use a mouse, or the "Remote Mouse" feature of the "WirelessMedia Lite for IOS" or "WirelessMedia Lite for Android" to click the <u>Setting</u> button on the home page.
Use "WirelessMedia Lite for Android" application in Android device or "WirelessMedia Lite for IOS" application in IOS device, and it can't find AirShare device	WIFI hotspot password changed, when android or IOS device is connected to the WIFI hotspot of AirShare	Pair a launcher (PC client software) to the DV-AS-21 by connecting USB STICK to either USB port of AirShare to download proper launcher. Run the "WirelessMedia Lite for PC" software, until the visual button shows "ready to share".
"WirelessMedia Lite for Android" or "WirelessMedia Lite for IOS" can't work	WIFI hotspot password changed, when android is connected to the WIFI hotspot of AirShare	Find out the changed password and enter on the mobile devices.

	Mobile devices doesn't connect to the Hotspot of AirShare	<p>Connect the mobile devices' WIFI to the AirShare again</p> <p>Be sure of entering the correct password</p>
	Doesn't connect AirShare to the same LAN as the mobile devices	Be sure the AirShare is connected in the same LAN as "WirelessMedia Lite for Android" or "WirelessMedia Lite for IOS"
	Doesn't connect to the correct AirShare	On Android or IOS devices application, click the DEVICE LIST , and click the searched devices, such like "AirShare-***"
The image quality on the main display screen is not good.	The quality or length of the cable between the Base Unit and the display or the connection between these two.	<p>Replace the cable</p> <p>Use another cable.</p> <p>Check the cable to be fasten properly.</p>
	<p>Improper resolution for the main screen.</p> <p>AirShare can output 1920X1200_60Hz 1920x1080_60Hz.</p>	Change the resolution on the Setting configuration. And match it to the native resolution of the main screen. See " Setting " page.
Bad wireless connection. The connection between the transmitter launcher (PC client software) to the base unit is not stable, always fall away.	Wireless congestion	Use a Wi-Fi scanner to find a free wireless frequency and channel and select it via the setting configuration.
	Low signal strength	<p>Put the base unit closer to the main screen.</p> <p>Change the orientation of the antennas at the real panel of AirShare to the PC direction.</p> <p>Remove or limit as much as possible all obstructions between the PC and base unit.</p>
Can't get the WirelessMedia Lite app to run when inserted into laptop	Bad connection at USB port on the laptop	<p>Reconnect to the USB port</p> <p>Try another USB port</p> <p>Reboot the laptop</p>

	Some types of USB devices might be blocked as the company policy. USB port setting on the laptop might limit the usage of high power USB device when on battery power.	If possible, change the USB port policy on the laptop
Low video performance	Laptop performance	Lower the screen resolution of the laptop Disable the hardware acceleration for video
	Wireless Connectivity	See “Bad wireless connection”
Video is not shown on screen	The content use HDCP	AirShare input can't support showing HDCP source. If possible, connect the source device to local HDMI input
When using window 7 the following message about the Window Aero color scheme appears “Windows has detected your computer's performance is slow. This could be because these are not enough resources to run the windows Aero color scheme. To improve...”	AirShare uses resource from the GPU. In combination with other programs which do so, Window 7 sometimes shows this message suggesting to disable Aero to improve the performance of laptop.	It's safe to ignore this message and choose “Keep the current color scheme.”
Your content is removed from the display and the visible button on PC is blinking	Connection to the Base Unit is lost.	AirShare tries to restore the connection automatically. If it fails, the visible button change to grey. Unplug the button from your laptop and try a new button.
Nothing is shown on the displays at all	The displays are switched off	Switch on the display
	The display cable is not correctly connected	Insert the display cable to the display and the Base Unit
	The display doesn't recognize or is not able to display the Base Unit resolution	Change the corresponding setting via the Setting Configuration. See “ <u>Setting</u> ” page.

	The Base Unit is in standby mode	Briefly push the standby mouse on the Base Unit or power off and on again the Base Unit.
Bad Wi-Fi connection	Congestion of the wireless channel	Use wireless network scan tool to look for free or the least congested channels.
	Metal cabinets, walls, construction elements, ...can cause reflections deteriorating the wireless signal Obstructions between Buttons and Base Unit cause lowering of the wireless strength and quality.	Move the Base Unit to another place Avoid placing it inside cabinets, false ceiling, below the table, behind the wall, in another room in the room. Re-orient the Base Unit Antennas
No LAN connection with the Base Unit	Wrong IP address	IP address is not within LAN range
		DHCP is not enabled.
No Wi-Fi connection with Base Unit	SSID not correct	Enter the correct SSID
No Wi-Fi connection between mobile device with Base Unit	Wrong Wi-Fi frequency	Check mobile device to select the correct 2.4GHz or 5GHz
	Wrong password	Enter the correct SSID
No audio when transmit local file to Base Unit	Unsupportive audio format, including Dolby MS11, DDCO, DTS-LBR, DTSE, DTSNeoUltra, SRS-THEATERSOUND, DTS_StudioSound3D, DTS_HD	If possible, reformat it to the other audio format, like DD, DD+, HE-AAC, DTS DMP, WMA, DRA, COOK
Can't enter the File Sharing/File Exchange when use WirelessMedia Lite for IOS on mobile devices	WirelessMedia Lite APP is set to run in the background. Due to Apple policy, any program which set to background can't run anymore.	Put WirelessMedia Lite application back to front stage
Can't update the AirShare	Flash disk format is NTFS	Re-format the flash disk to be FAT format to update it.

Can't work Screen Mirroring with MacBook/iPhone?	Operation System Requirement Mac OSX 10.6/10.7/10.8/10.9/10.10 IOS 8.0 and later (WirelessMedia Lite app)	Updated to the later OS
Can't work with Android device?	Operation System Requirement Android 2.3 and later (WirelessMedia Lite app)	Updated to the later OS
Can't work with windows PC/Laptop	Didn't run the proper launcher (PC client software) corresponding to the AirShare.	Try to download launcher from the AirShare's USB port.
	Operation System Requirement Windows XP/Vista/7/8/8.1/10 32 & 64 bit	Updated to the later OS