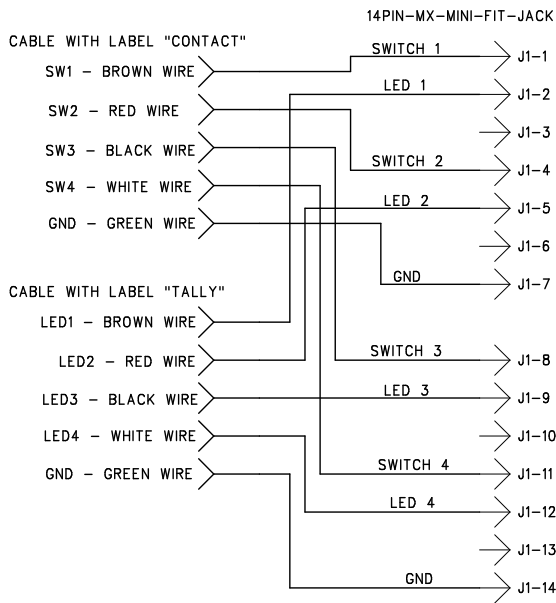


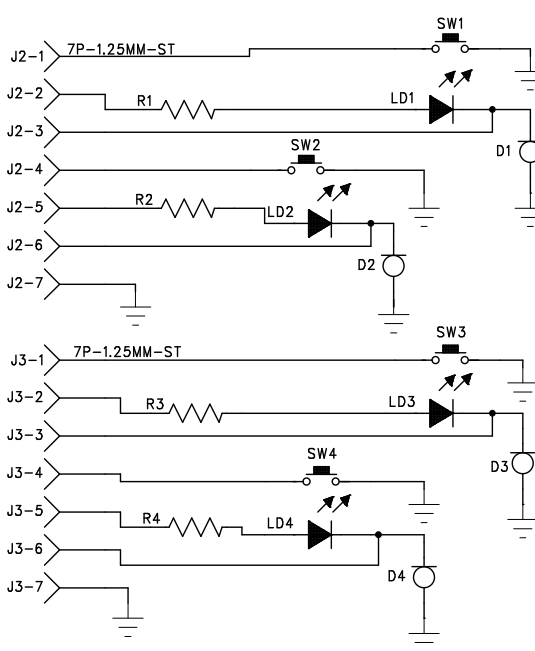
SCHEMATIC

Switch contact rating: 50 mA @ 12 VDC
Led Voltage range 7-24VDC

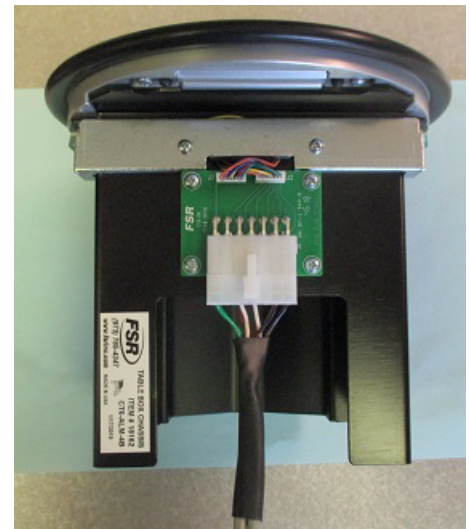
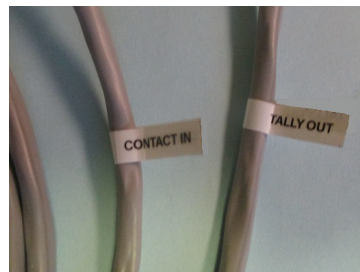
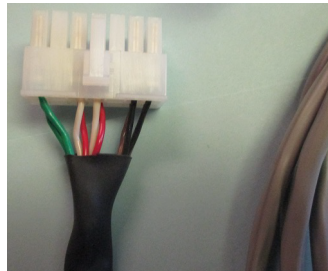
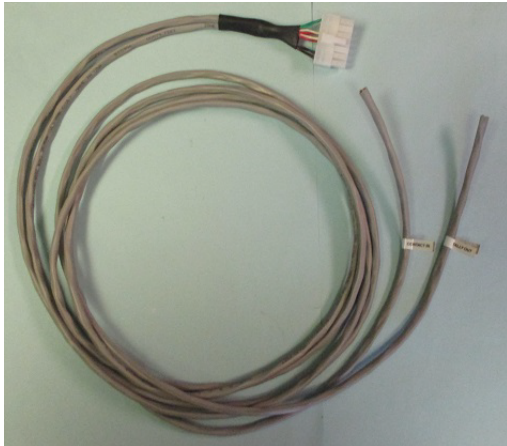
CABLE



CT6-4B TABLE BOX



Led Current:
internally regulated
at 16 mA nominal
over recommended
operating voltage
range.



WIRING CABLE WITH "CONTACT IN" LABEL

SWITCH 1 = BROWN WIRE
SWITCH 2 = RED WIRE
SWITCH 3 = BLACK WIRE
SWITCH 4 = WHITE WIRE
GROUND = GREEN WIRE

WIRING CABLE WITH "TALLY OUT" LABEL

LED 1 = BROWN WIRE
LED 2 = RED WIRE
LED 3 = BLACK WIRE
LED 4 = WHITE WIRE
GROUND = GREEN WIRE

REV. LEVEL	REF. ECO	REV. DATE	APPROVED	DESCRIPTION

FSR 244 BERGEN BLVD. W. PATERSON, NJ 07424 TEL. (973) 785-4347			
CT6-4B WIRING			
PRODUCT: CT6-4B		PART# 18161-162	
DRAWN BY: A.B.		DATE: 01-23-2019	
APPROVED BY:		DATE:	
DWG.# C-1198		REV.	PAGE 1 OF 1